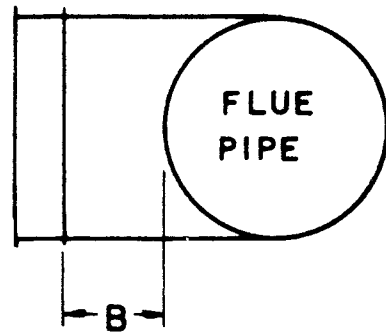
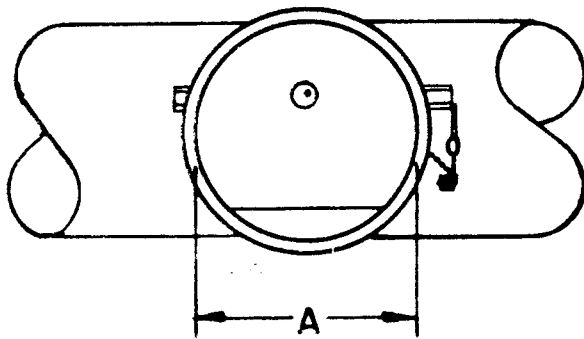


INSTRUCTIONS FOR INSTALLING

FIELD MGI

CONTROLS WITHOUT COLLARS



CONTROL SIZE (A)	6	7	8	9
CORRECT COLLAR LENGTH (B)	2-11/16	3-3/8	4-3/8	5-1/8

BE SURE TO USE CORRECT
COLLAR LENGTH. TOO SHORT
OR TOO LONG MEANS A LESS
EFFECTIVE CONTROL.