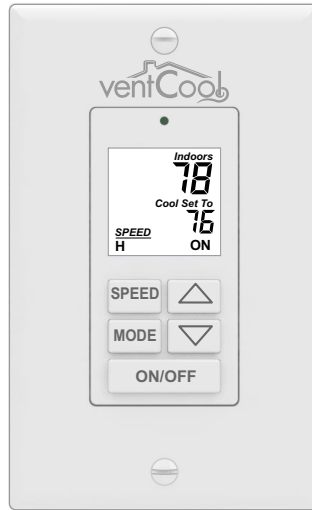


INSTALLATION AND USER MANUAL

VentCool® WTT

Whole House Fan Wall Control



The VentCool whole house fan wall control uses temperature or a timer to control the whole house fan. The wall control is installed in the sleeping space of the home and connects to the FC3JF already installed on the VentCool whole house fan using a plug&play cable included.

In temperature control, the homeowner turns on the whole house fan and sets their comfort temperature. The VentCool whole house fan will cool the home until the indoor temperature drops just below the comfort temperature then turn off. A built-in safety timer will turn the fan off the following morning in case the homeowner forgets. In timer control, the homeowner turns the fan on and sets the timer interval. The fan will run for the time set then turn off. The WTT wall control is also used to adjust the fan speed.

COMPONENTS:

- 1 - VentCool WTT Whole House Fan Wall Control [WTT] (p/n 580011702)
- 1 - 50 Foot RJ12 Plug&Play Cable [PNP50] (p/n 580011550)
- 1 - VentCool Logo cover plate
- 1 - Mounting hardware kit
- 1 - Installation and User Manual

****A VentCool Fan Control Module [FC3JF] p/n (580011701) must be installed on whole house fan assembly for this wall control (WTT) system to function properly.**

READ THESE INSTRUCTIONS CAREFULLY AND COMPLETELY BEFORE PROCEEDING WITH THE INSTALLATION.

This device **MUST** be installed by a qualified agency in accordance with the manufacturer's installation instructions. The definition of a qualified agency is: any individual, firm, corporation or company which either in person or through a representative is engaged in, and is responsible for, the installation and operation of HVAC appliances, who is experienced in such work, familiar with all the precautions required, and has complied with all the requirements of the authority having jurisdiction.

Please retain these instructions after installation.

Installed By: _____ Phone: _____ Installation Date: _____



HOMEOWNER SECTION

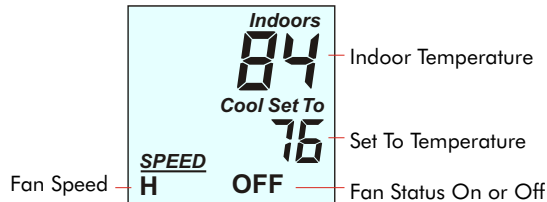
This manual is separated into two different sections: one for the Homeowner and one for the Installer. The Homeowner section contains information on features and operation of the wall control.

Before operating your whole house fan, be sure to open windows and close fireplace dampers.
Refer to your whole house fan manual for more information regarding operating your fan.

The WTT wall control controls the whole house fan using temperature or timer control. Temperature control optimizes your comfort and energy savings by never overcooling your home and only running the fan when needed.

The WTT defaults to Temperature Control.

Temperature Control



Turn the Fan On

PRESS **ON/OFF** to display ON. The fan will run (ON blinking) when the Set To Temperature is below the Indoor Temperature.

Adjust the Cool Set To (Comfort) Temperature

PRESS and HOLD **▲** or **▼** to adjust the Set To Temperature.

When the Set To Temperature is lower than the indoor temperature, the fan is On and running (ON blinking). When the Set To Temperature is above the indoor temperature, the fan is not running (ON is not blinking).

Safety Features in Temperature Control

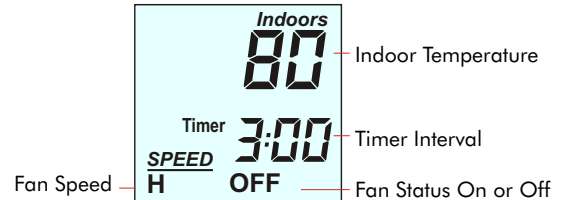
The WTT On/Off key has to be pressed to turn the fan On. In addition, there is a built in safety timer that will automatically turn the fan off after 8 hours in case the homeowner forgets.

Adjust the Safety Timer Hours

PRESS and HOLD **MODE** for 7 seconds until STimer is displayed.

PRESS and HOLD **▲** or **▼** to adjust the safety timer hours from 1 to 12 hours.

Timer Control



Switch To Timer Control

PRESS **MODE** then PRESS **▲** to select Timer Control. To return to Temperature Control, press **MODE** then press **▼**.

Turn the Fan On

PRESS **ON/OFF** to turn the fan ON. The fan will run for the timer interval displayed.

Adjusting the Timer Setting

PRESS and HOLD **▲** or **▼** to adjust the current Timer Setting. Or, to set your preferred Timer Setting, turn the fan Off and PRESS and HOLD **▲** or **▼** to adjust the timer setting. This timer setting will be used each time the fan is turned on.

Adjusting the Fan Speed

PRESS **SPEED** then PRESS and HOLD **▲** **▼** to adjust the fan speed. Available fan speeds depends on the type of fan installed.

1-Speed Fan

Homeowner can select High (H) only. **SPEED**
H

2-Speed Fan

Homeowner can select High (H) or Low (L). **SPEED** **SPEED**
H **L**

3-Speed Fan

Homeowner can select High (H), Medium (M) or Low (L). **SPEED** **SPEED** **SPEED**
H **M** **L**

Note: The WTT wall control is factory set for 2 speed operation out of box from factory. If you have a 3-speed fan but can only select High (H) or Low (L), the number of fan speeds may not have been set properly. Refer to Step 5, Set The Number of Fan Speeds, in the installer section of this manual.

INSTALLER SECTION

This manual is separated into two different sections: one for the Homeowner and one for the Installer.

The Homeowner section contains information on features and operation of the wall control.

⚠ CAUTIONS

- Turn off power before installing whole house fan and controls.
- Read and follow all instructions carefully, including those included with the whole house fan. Read entire manual before installing products.
- Follow all local electrical codes during installation. All wiring must conform to local and national electrical codes.
- Installation should be performed by a qualified individual with sufficient experience and skill.
- Use cautions when mounting components to surfaces that may have concealed wiring beneath the surface.
- When servicing WHF controls, turn off all power to these items.

Step 1. Install a Plastic Retrofit Gang Box

The WTT is installed in the upstairs sleeping space. Install a plastic retrofit single gang box about 5' off the floor in a location that will best sense the temperature for the space. Do not install in a location where the temperature will be influenced such as in direct sunlight, on an exterior wall, etc. **Do not install WTT in a metal gang box.**



Step 2. Connect Cable to the FC3JF

Connect one end of the "RED" Plug&Play cable into the FC3JF fan control module already installed on the junction box on the fan.

Feed this end to the gang box

Insert into FC3JF already installed on fan.



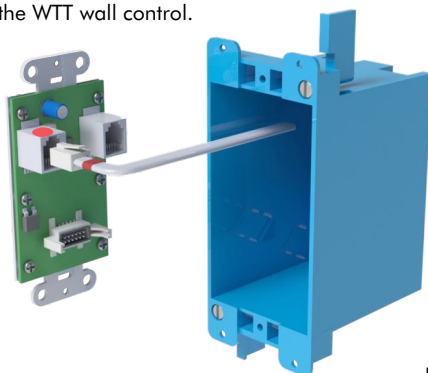
Pass the other end of the cable through the opening in the gang box.



Step 3. Connect Cable to the WTT

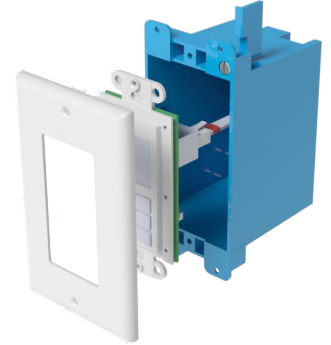
Connect the other end of the "RED" Plug&Play cable into the "RED" connector on the back of the WTT wall control.

Connect to "RED" connector on back of WTT



Step 4. Attach the WTT and Wall Plate

Attach the WTT wall control to the plastic gang box using the screws provided. Attach the wall plate to the WTT using the screws provided in the wall plate.



Step 5. Set the Number of Fan Speeds

Apply 120VAC power the whole house fan. The LCD on the WTT should lite up.

PRESS and HOLD **MODE** for about 7 seconds until STimer is displayed. Press **MODE** again to display the number of speeds. Press **▲** to set a 3-speed fan or press **▼** to set a 1-speed fan.

The WTT wall control is factory set for 2 speed operation from the factory. Refer to your VentCool Whole House Fan for number of fan speeds available with your model and adjust your WTT to match.

Step 6. Commissioning

CHECK FAN OPERATION

Press **MODE** then press **▲** to select TIMER CONTROL.

Press **ON/OFF** to turn the fan ON. Ensure that the fan is running

CHECK FAN SPEEDS

For a 3-Speed fan, press **SPEED** then press **▼** to lower the fan speed. **M** should be displayed and the fan should be operating at Medium Speed. Press **SPEED** then press **▼** to lower the fan speed. **L** should be displayed and the fan should be operating at Low Speed. Press **SPEED** then press **▲** to display **H** and return to High Speed.

For a 2-Speed fan, press **SPEED** then press **▼** to lower the fan speed. **L** should be displayed and the fan should be operating at Low Speed. Press **SPEED** then press **▲** to display **H** to return to High Speed.

RETURN TO TEMPERATURE CONTROL

Press **MODE** then press **▼** to select TEMPERATURE CONTROL.

MAINTENANCE, TROUBLESHOOTING AND ADD ONS

The WTT LCD is not lit.

Ensure that the cable is completely plugged into the "RED" connector on the WTT and the FC3JF. You should hear the connectors click. Ensure that the fan is powered. Ensure the wiring from the FC3JF fan control to the whole house fan is correct.

Fan speeds available is not correct.

Ensure that the number of speeds set in Step 5 correspond to the type of fan installed - 1-speed, 2-speed or 3-speed fan.

Fan speed operation does not match wall control setting.

Verify HS, MS and LS wire connections of fan control module (FC3JF) located on fan assembly in attic are correctly wired per the WHF product model installed. Refer to specific WHF Installation manual for wiring diagrams.

The display indicates On but the fan is not running.

If On is not blinking and the WTT is in Temperature Control, make sure the Set To temperature is a few degrees lower than the Indoor temperature. On will blink when the fan is running.

If an outdoor temperature sensor is installed and the outdoor temperature is above the limit set, whole house fan operation may be delayed. When delayed, "LIMIT" blinks.

If On is blinking but the fan is not running, check the wiring from the FC3JF fan control to the whole house fan.

The WTT wall control enables you to easily add optional Wireless or WiFi control without having to go into the attic or giving up the wall control.



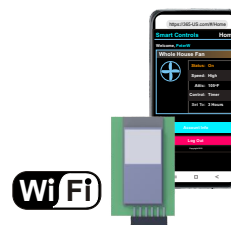
For wireless control, a WLM Wireless Module is plugged into the back of the WTT and the RTT Wireless Remote is used to control the fan from anywhere within your home.

For WiFi control, a WFM WiFi Module is plugged into the back of the WTT and your smart phone is used to control the fan from anywhere.

Contact Customer Service at sales@fieldcontrols.com or 252-522-3031 to purchase optional upgrade components.



Model WLM-RTT
Wireless Remote and Plug-in
Wireless Module



Model WFM
Plug-in WiFi Module (smart phone
product provided by homeowner)

SPARE PARTS AND ACCESSORY LIST

Field Controls Part Number	Model Number	Description
580011702	WTT	Whole House Fan Wall Control with Temperature, Timer and Speed Control. For 1, 2 or 3-Speed PSC or ECM fans. Includes 50 FT plug&play cable and hardware kit.
580011701	FC3JF	Whole House Fan Control Board. For 1, 2 or 3-Speed PSC or ECM fans.
580011704	WLM-RTT	Wireless Remote Control Upgrade Kit. Includes WLM Wireless Plug-In Module and RTT Wireless Remote Control.
580011705	WFM	WiFi Control Upgrade Kit. Includes WLM WiFi Plug-In Module.
580011706	WLM	Replacement WLM wireless plug-in module.
580011707	RTT	Replacement RTT wireless remote control.
580011550	PNP50	Cable 50 FT PNP50 VentCool

This manual may be downloaded and printed from the Field Controls website (www.fieldcontrols.com)

WARRANTY

For warranty information about this or any Field Controls product, visit:
www.fieldcontrols.com

Field Controls Technical Support
1.800.742.8368
fieldtec@fieldcontrols.com

Field Controls Customer Service
1.252.522.3031
sales@fieldcontrols.com



9154 Stellar Ct
Corona, CA 92883

Phone: 252.522.3031 • Fax: 252.522.0214
www.fieldcontrols.com

2630 Airport Road
Kinston, NC 28504