

# ENGINEERING DATA

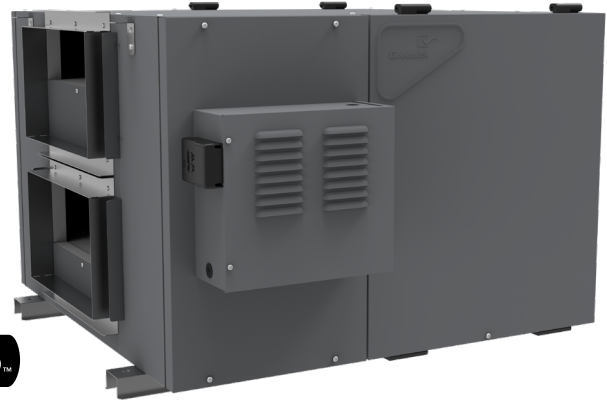
## LCH-7H

### Heat Recovery Ventilator

500 CFM (236 L/s) to 750 CFM (354 L/s)

Item No. 463301

Field Controls P/N: 605108007



AHRI CERTIFIED

#### FEATURES

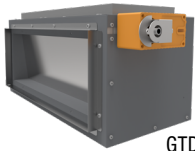
- Push-pull configuration
- 100% Variable speed
- 4 Operating modes\* (Intermittent; Continuous; High; \*Optional Recirculation)
- Advanced electronic balancing
- Dual service doors & reversible electrical box

#### APPLICABLE REQUIREMENTS

- Technical data was obtained from published results of test relating to AHRI 1060 Standards
- CSA Standard CSA 22.2 N° 113-10 - Fans and ventilators
- UL Standard 1812 2<sup>nd</sup> Ed. Ducted heat/energy recovery ventilators (HRV/ERV)

#### OPTIONS

- ☐ 605110010 GTDMK14 Recirculation damper module kit
- ☐ 605110014 GTPDK14 O/A motorized prevention damper kit



GTDMK14



GTPDK14

#### CABINET

- 20 gauge galvanized pre-painted steel corrosion resistant

#### ELECTRONIC COMPONENTS

- Electrical Input Voltage: 120 VAC/60Hz / 1-Phase
- Electrical Input Current: 5.58 Amps Max
- Integrated auxiliary furnace interlock relay
- Integrated 24V connection (18VA)
- RoHs compliant

#### MOTORS

- Two (2) factory balanced fans with backward curved blades.
- Motors come with permanently lubricated sealed ball bearings, maintenance free
- Thermal overload protection
- IP protection class 44 according to DIN 40 050
- 115V, 60Hz, 2.96 Amps
- Maximum RPM 2750 / Horsepower; 0.42 HP

#### ALUMINUM HRV CORE

- Dimensions (2) 12" x 12" x 15" depth (305 mm x 305 mm x 380 mm)
- Corrugated cross-flow
- Transfers sensible heat
- Endure harsh temperatures; effective in cold climates
- Water washable

#### ELECTRONIC BALANCING SYSTEM (DUOTROL)

- The system is balanced by adjusting each motor independently
- No balancing dampers required
- Connection terminals for optional wall controls
- Quiet and energy efficient

#### DEFROST

- Advanced supply fan shut down defrost sequence
- Defrost type: Evacuation  
Activated automatically at -5°C (23°F)
- Optional defrost type: Recirculation  
(Requires GTDMK14 Damper module kit.)

#### DUCT CONNECTIONS

- (4) 8" x 14" (203 mm x 355 mm)

#### MOUNTING

- Saddle installation
- Suspended installation with threaded rod (not included)

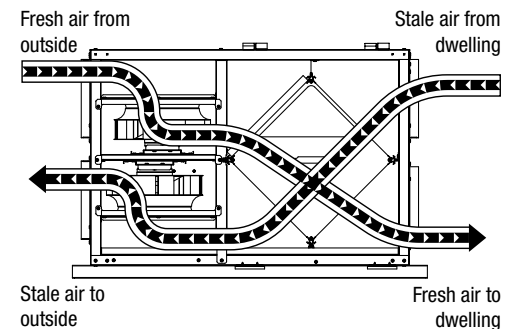
#### FILTERS (MERV6)

- The FRESH/EXHAUST air streams are protected by MERV6 washable filters constructed to meet UL 900.

#### WARRANTY

- 2 year limited warranty on motors
- 2 year limited warranty on parts
- 15 year limited warranty on Heat Recovery Core

#### AIRFLOW



Greentek  
50 Kanalfakt Way,  
Bouchouche, NB Canada E4S 3M5

Toll free: 1 888 724-5211  
Fax: 1 (866) 426-7430

Visit us at: [www.greentek.ca](http://www.greentek.ca)

444888 / MARCH2019



Greentek reserves the right to modify a product, without prior notice, whether in design, colour or specifications, in order to offer at all times a quality product that is highly competitive. Please consult your national and local building codes to find out whether the installation of electrical products requires the services of a certified technician or electrician. Greentek™ is a registered Trademark used under license by Systemair Inc. All rights reserved.

# ENGINEERING DATA LCH-7H

## SPECIFICATIONS LCH-7H

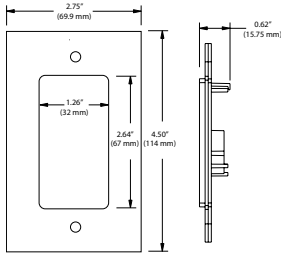
<b>Dimensions</b>	36.5" x 36.25" x 22" (927 mm x 921 mm x 559 mm)
<b>Duct Connections</b>	Four (4) 8"x 14" (203mm x 355mm)
<b>Airflow Rates</b>	500 CFM (236 L/s) to 750 CFM (354 L/s)
<b>Motor</b>	Two (2) factory balanced fans with backward curved blades
<b>Voltage</b>	120 VAC @ 60 Hz / 1 Phase
<b>Amperage</b>	5.58A / 670 Watts
<b>Type of Heat Exchanger</b>	(2) Aluminum Cross-flow
<b>Exchange Surface</b>	>342 in <sup>2</sup> (0.22m <sup>2</sup> )
<b>Standard Defrost Type</b>	Evacuation
<b>Optional Defrost Type</b>	Recirculation (with 463303 GTDMK14 Damper)
<b>Filters</b>	Four (4) MERV 6 washable filters
<b>Drain Connection</b>	Two (2) 1/2" (12.7 mm)
<b>Actual Weight</b>	185 lbs (84 Kg)
<b>Shipping Weight</b>	255 lbs (116 Kg)
<b>Shipping Dimensions</b>	38" x 38" x 27" (965mm x 965mm x 686mm)
<b>Certification</b>	cCSAUs, CSA 22.2 N°113 Complies with UL 1812

## OPTIONAL WALL CONTROLS

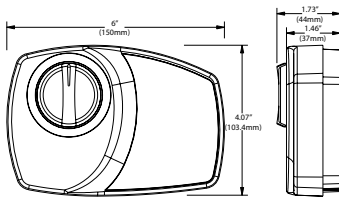
<b>Vectra Series</b>	EHC 1.5 and EHC 1.0
<b>RD Series</b>	RD-1, RD-2, RD-3P, RD-4P, RD-3D*, RD-4D* * Recirculation
<b>Timers</b>	T3 (20, 40, 60 minutes)

## WALL CONTROL DIMENSIONS

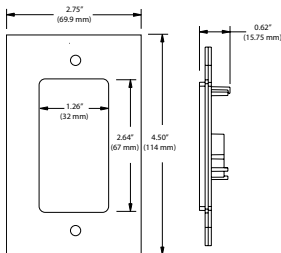
### Vectra Series



### RD Series

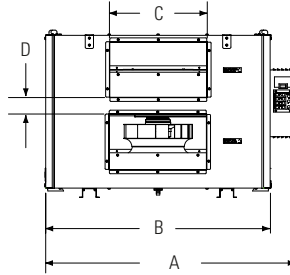


### T3 Timer

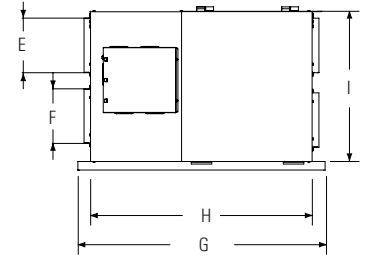


## DIMENSIONS DATA

Side View



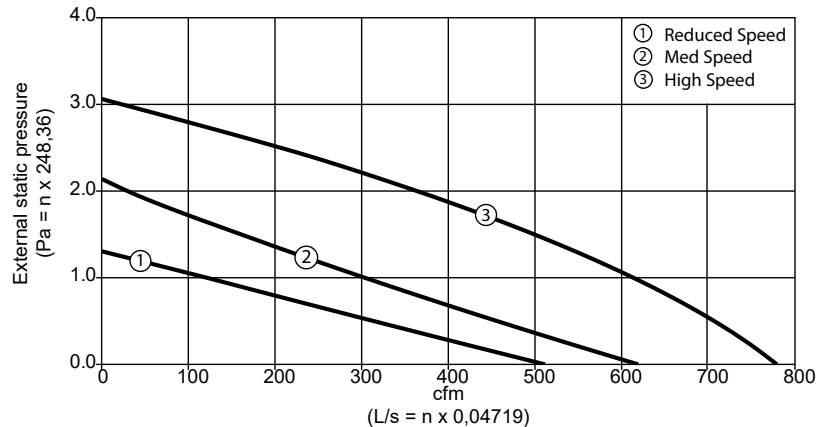
Front View



A	B	C	D	E	F	G	H	I
in (mm)	in (mm)	in (mm)	in (mm)	in (mm)	in (mm)	in (mm)	in (mm)	in (mm)
36 1/2 (927)	32 3/16 (818)	13 7/8 (352)	2 3/8 (60)	8 (203)	8 (203)	36 1/4 (921)	32 1/2 (826)	22 (559)

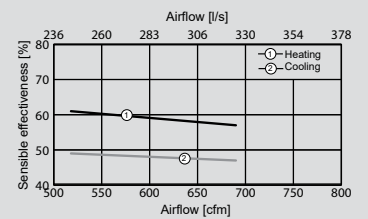
## VENTILATION PERFORMANCE

in. wg. (Pa)	0.2 (50)	0.4 (100)	0.6 (150)	0.8 (200)	1.0 (250)	1.4 (350)	1.8 (450)	2.2 (550)
	cfm (L/s)	cfm (L/s)	cfm (L/s)	cfm (L/s)	cfm (L/s)	cfm (L/s)	cfm (L/s)	cfm (L/s)
Supply High	753 (355)	723 (341)	689 (325)	653 (308)	613 (289)	522 (246)	418 (197)	301 (142)
Supply Med	552 (260)	487 (230)	424 (200)	362 (171)	302 (143)	187 (88)	118 (56)	-
Supply Low	432 (204)	352 (166)	274 (129)	196 (93)	120 (57)	-	-	-



## ENERGY PERFORMANCE CORE\*

	Net Air Flow		Net Effectiveness	
	L/s	CFM	Sensible	Total
<b>HEATING</b>				
	326	690	57	37
	244	518	61	40
<b>COOLING</b>				
	326	690	47	18
	244	518	49	19



\*Actual performance may vary pending conditions

Quoted by:	Date:
Project:	Remarks:
Quantity:	
Model:	
Site:	
Architect:	
Engineer:	
Contractor:	