

ENGINEERING DATA

LCH-4E

Energy Recovery Ventilator

200 CFM (94 L/s) to 450 CFM (212 L/s)

Item No. 463303

Field Controls P/N: 605109004



AHRI CERTIFIED™

FEATURES

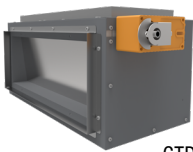
- Push-pull configuration
- 100% Variable speed
- 4 Operating modes* (Intermittent; Continuous; High; *Optional Recirculation)
- Advanced electronic balancing
- Dual service doors & reversible electrical box

APPLICABLE REQUIREMENTS

- Technical data was obtained from published results of test relating to AHRI 1060 Standards
- CSA Standard CSA 22.2 N°113-10 - Fans and ventilators
- UL Standard 1812 2nd Ed. Ducted heat/energy recovery ventilators (HRV/ERV)

OPTIONS

- ☐ 605110010 GTDMK14 Recirculation damper module kit
- ☐ 605110014 GTPDK14 O/A motorized prevention damper kit



GTDMK14



GTPDK14

CABINET

- 20 gauge galvanized pre-painted steel corrosion resistant

ELECTRONIC COMPONENTS

- Electrical Input Voltage: 120 VAC/60Hz / 1-Phase
- Electrical Input Current: 4.17 Amps Max
- Integrated auxiliary furnace interlock relay
- Integrated 24V connection (18VA)
- RoHs compliant

MOTORS

- Two (2) factory balanced fans with backward curved blades.
- Motors come with permanently lubricated sealed ball bearings, maintenance free
- IP protection class 44 according to DIN 40 050
- 115V, 60Hz, 2.1 Amps
- Maximum RPM 2750 / Horsepower; 0.42 HP

POLYMER MEMBRANE ERV CORE

- Dimensions (2) 11.4" x 11.4" x 11.4" depth (290 mm x 290 mm x 290 mm)
- Corrugated aluminum layers, combined with advanced polymer membrane, UL94 HF-1
- Transfers both sensible & latent heat.
- Endure harsh temperatures; effective in warm and cold climates
- Water washable
- Meets ASHRAE 90.1

ELECTRONIC BALANCING SYSTEM (DUOTROL)

- The system is balanced by adjusting each motor independently
- No balancing dampers required
- Connection terminals for optional wall controls
- Quiet and energy efficient

DEFROST

- Advanced supply fan shut down defrost sequence
- Defrost type: Evacuation
Activated automatically at -5°C (23°F)
- Optional defrost type: Recirculation
(Requires GTDMK14 Damper module kit.)

DUCT CONNECTIONS

- (4) 8" x 14" (203 mm x 355 mm)

MOUNTING

- Saddle installation
- Suspended installation with threaded rod (not included)

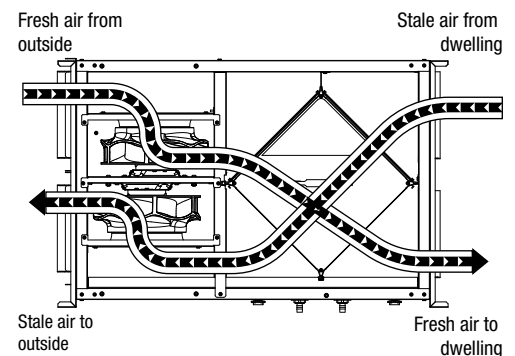
FILTERS (MERV6)

- The FRESH/EXHAUST air streams are protected by MERV6 washable filters constructed to meet UL 900.

WARRANTY

- 2 year limited warranty on motors
- 2 year limited warranty on parts
- 3 year limited warranty on Energy Recovery Core

AIRFLOW




Greentek

Greentek
50 Kanalfakt Way,
Bouctouche, NB Canada E4S 3M5

Toll free: 1 888 724-5211
Fax: 1 (866) 426-7430

Visit us at: www.greentek.ca

444892 / March 2019



Greentek reserves the right to modify a product, without prior notice, whether in design, colour or specifications, in order to offer at all times a quality product that is highly competitive. Please consult your national and local building codes to find out whether the installation of electrical products requires the services of a certified technician or electrician. Greentek™ is a registered Trademark used under license by Systemair Inc. All rights reserved.

ENGINEERING DATA LCH-4E

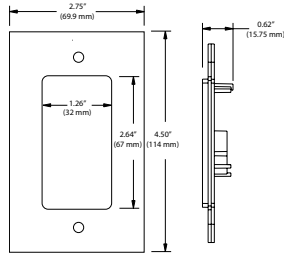
SPECIFICATIONS LCH-4E

Dimensions	29.5" x 35.9" x 22.7" (747 mm x 911 mm x 577 mm)
Duct Connections	Four (4) 8"x 14" (203mm x 355mm)
Airflow Rates	200 CFM (94 L/s) to 450 CFM (212 L/s)
Motor	Two (2) factory balanced fans with backward curved blades
Voltage	120 VAC @ 60 Hz / 1 Phase
Amperage	4.17A / 500 Watts
Type of Heat Exchanger	Two (2) Cross-flow (Enthalpic Polymer Membrane)
Exchange Surface	>260 in ² (0.17m ²)
Standard Defrost Type	Evacuation
Optional Defrost Type	Recirculation (with 463303 GTDMK14 Damper)
Filters	Four (4) MERV 6 washable filters
Drain Connection	Two (2) 1/2" (12.7 mm)
Actual Weight	132 lbs (60 Kg)
Shipping Weight	167 lbs (76 Kg)
Shipping Dimensions	38" x 38" x 27" (965mm x 965mm x 686mm)
Certification	cCSAUS, CSA 22.2 N°113 Complies with UL 1812

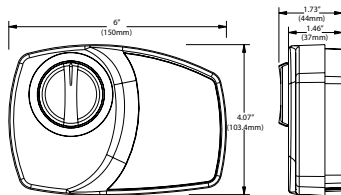
OPTIONAL WALL CONTROLS

Vectra Series	EHC 1.5 and EHC 1.0
RD Series	RD-1, RD-2, RD-3P, RD-4P RD-3D*, RD-4D* * Recirculation
Timers	T3 (20, 40, 60 minutes)

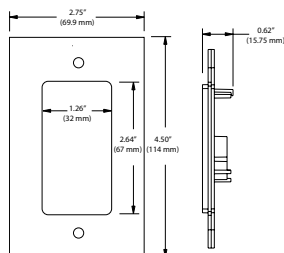
Vectra Series



RD Series

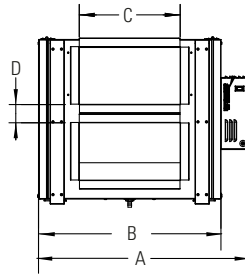


T3 Timer

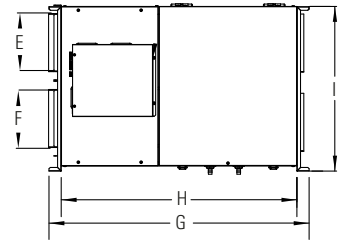


DIMENSIONS DATA

Side View



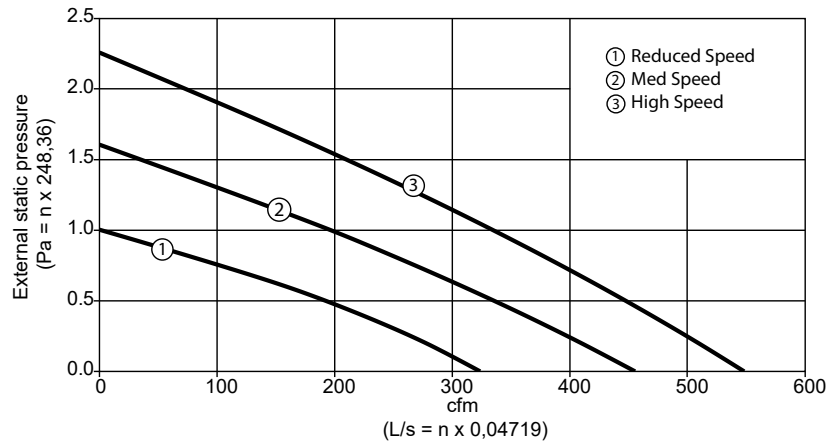
Front View



A	B	C	D	E	F	G	H	I
in (mm)	in (mm)	in (mm)	in (mm)	in (mm)	in (mm)	in (mm)	in (mm)	in (mm)
29 1/2 (747)	25 1/8 (639)	14 (355)	2 1/2 (64)	8 (203)	8 (203)	35 15/16 (911)	32 1/2 (826)	22 11/16 (577)

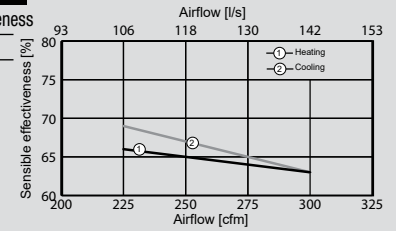
VENTILATION PERFORMANCE

in. wg. (Pa)	0.2 (50)	0.4 (100)	0.6 (150)	0.8 (200)	1.0 (250)	1.2 (300)	1.4 (350)	1.6 (400)
	cfm (L/s)	cfm (L/s)	cfm (L/s)	cfm (L/s)	cfm (L/s)	cfm (L/s)	cfm (L/s)	cfm (L/s)
Supply High	509 (240)	468 (221)	425 (201)	381 (180)	334 (158)	285 (135)	235 (111)	182 (86)
Supply Med	410 (193)	361 (170)	309 (146)	254 (120)	196 (93)	135 (64)	70 (33)	-
Supply Low	277 (131)	222 (105)	158 (75)	85 (40)	-	-	-	-



ENERGY PERFORMANCE CORE*

	Net Air Flow		Net Effectiveness		Net Effectiveness	
	L/s	CFM	Sensible	Latent	Total	
HEATING	142	300	63	46	59	
	106	225	66	51	64	
COOLING	142	300	63	42	58	
	106	225	66	48	63	



*Actual performance may vary pending conditions

Quoted by:	Date:
Project:	Remarks:
Quantity:	
Model:	
Site:	
Architect:	
Engineer:	
Contractor:	