

ENGINEERING DATA

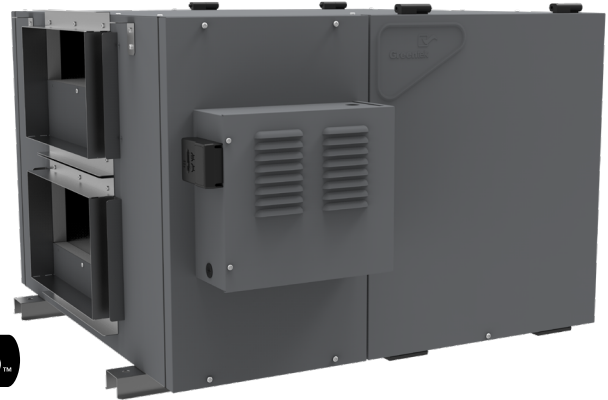
LCH-7E

Energy Recovery Ventilator

500 CFM (236 L/s) to 750 CFM (354 L/s)

Item No. 463304

Field Controls P/N: 605109007



AHRI CERTIFIED

FEATURES

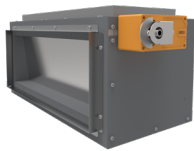
- Push-pull configuration
- 100% Variable speed
- 4 Operating modes* (Intermittent; Continuous; High; *Optional Recirculation)
- Advanced electronic balancing
- Dual service doors & reversible electrical box

APPLICABLE REQUIREMENTS

- Technical data was obtained from published results of test relating to AHRI 1060 Standards
- CSA Standard CSA 22.2 N° 113-10 - Fans and ventilators
- UL Standard 1812 2nd Ed. Ducted heat/energy recovery ventilators (HRV/ERV)

OPTIONS

- ☐ 605110010 GTDMK14 Recirculation damper module kit
- ☐ 605110014 GTPDK14 O/A motorized prevention damper kit



GTDMK14



GTPDK14

CABINET

- 20 gauge galvanized pre-painted steel corrosion resistant

ELECTRONIC COMPONENTS

- Electrical Input Voltage: 120 VAC/60Hz / 1-Phase
- Electrical Input Current: 5.58 Amps Max
- Integrated auxiliary furnace interlock relay
- Integrated 24V connection (18VA)
- RoHS compliant

MOTORS

- Two (2) factory balanced fans with backward curved blades.
- Motors come with permanently lubricated sealed ball bearings, maintenance free
- Thermal overload protection
- IP protection class 44 according to DIN 40 050
- 115V, 60Hz, 2.96 Amps
- Maximum RPM 2750 / Horsepower; 0.42 HP

POLYMER MEMBRANE ERV CORE

- Dimensions (2) 12" x 12" x 15" depth (305 mm x 305 mm x 380 mm)
- Corrugated aluminum layers, combined with advanced polymer membrane, UL94 HF-1
- Transfers both sensible & latent heat.
- Endure harsh temperatures; effective in warm and cold climates
- Water washable
- Meets ASHRAE 90.1

ELECTRONIC BALANCING SYSTEM (DUOTROL)

- The system is balanced by adjusting each motor independently
- No balancing dampers required
- Connection terminals for optional wall controls
- Quiet and energy efficient

DEFROST

- Advanced supply fan shut down defrost sequence
- Defrost type: Evacuation
Activated automatically at -5°C (23°F)
- Optional defrost type: Recirculation
(Requires GTDMK14 Damper module kit.)

DUCT CONNECTIONS

- (4) 8" x 14" (203 mm x 355 mm)

MOUNTING

- Saddle installation
- Suspended installation with threaded rod (not included)

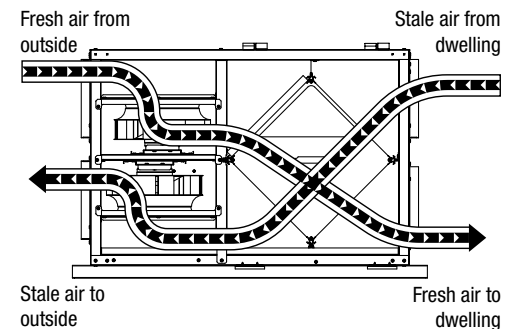
FILTERS (MERV6)

- The FRESH/EXHAUST air streams are protected by MERV6 washable filters constructed to meet UL 900.

WARRANTY

- 2 year limited warranty on motors
- 2 year limited warranty on parts
- 3 year limited warranty on Heat Recovery Core

AIRFLOW



Greentek
50 Kanalfakt Way,
Bouctouche, NB Canada E4S 3M5

Toll free: 1 888 724-5211

Fax: 1 (866) 426-7430

Visit us at: www.greentek.ca

444894 / MARCH2019



Greentek reserves the right to modify a product, without prior notice, whether in design, colour or specifications, in order to offer at all times a quality product that is highly competitive. Please consult your national and local building codes to find out whether the installation of electrical products requires the services of a certified technician or electrician. Greentek™ is a registered Trademark used under license by Systemair Inc. All rights reserved.

ENGINEERING DATA LCH-7E

SPECIFICATIONS LCH-7E

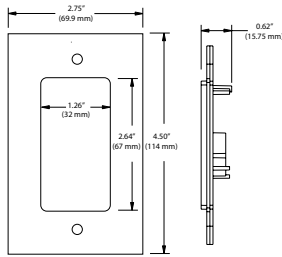
Dimensions	36.5" x 36.25" x 22" (927 mm x 921 mm x 559 mm)
Duct Connections	Four (4) 8"x 14" (203mm x 355mm)
Airflow Rates	500 CFM (236 L/s) to 750 CFM (354 L/s)
Motor	Two (2) factory balanced fans with backward curved blades
Voltage	120 VAC @ 60 Hz / 1 Phase
Amperage	5.58A / 670 Watts
Type of Heat Exchanger	Two (2) Cross-flow (Enthalpic Polymer Membrane)
Exchange Surface	>342 in ² (0.22m ²)
Standard Defrost Type	Evacuation
Optional Defrost Type	Recirculation (with 463303 GTDMK14 Damper)
Filters	Four (4) MERV 6 washable filters
Drain Connection	Two (2) ½" (12.7 mm)
Actual Weight	169 lbs (77 Kg)
Shipping Weight	239 lbs (108 Kg)
Shipping Dimensions	38" x 38" x 27" (965mm x 965mm x 686mm)
Certification	CSSAUS, CSA 22.2 N°113 Complies with UL 1812

OPTIONAL WALL CONTROLS

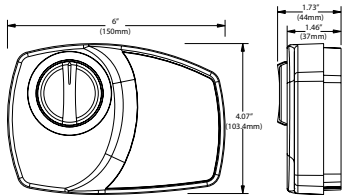
Vectra Series	EHC 1.5 and EHC 1.0
RD Series	RD-1, RD-2, RD-3P, RD-4P, RD-3D*, RD-4D* * Recirculation
Timers	T3 (20, 40, 60 minutes)

WALL CONTROL DIMENSIONS

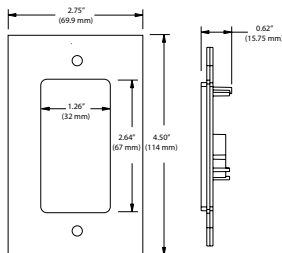
Vectra Series



RD Series

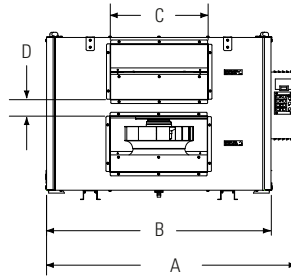


T3 Timer

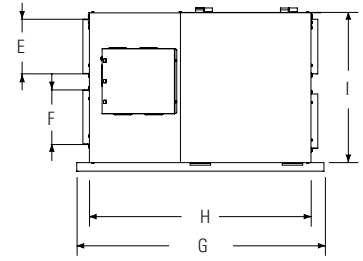


DIMENSIONS DATA

Side View



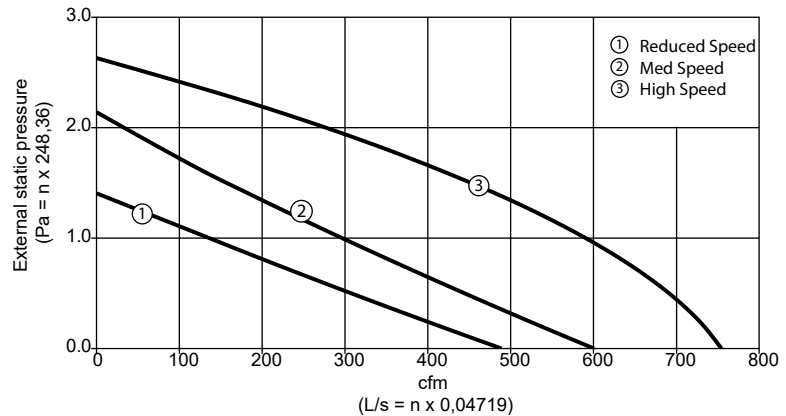
Front View



A	B	C	D	E	F	G	H	I
in (mm)	in (mm)	in (mm)	in (mm)	in (mm)	in (mm)	in (mm)	in (mm)	in (mm)
36 ½ (927)	32 ¾ (818)	13 ⅞ (352)	2 ⅜ (60)	8 (203)	8 (203)	36 ¼ (921)	32 ½ (826)	22 (559)

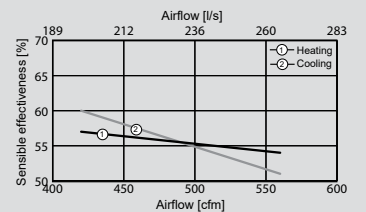
VENTILATION PERFORMANCE

in. wg. (Pa)	0.2 (50)	0.4 (100)	0.6 (150)	0.8 (200)	1.0 (250)	1.2 (300)	1.4 (350)	1.6 (400)
	cfm (L/s)	cfm (L/s)	cfm (L/s)	cfm (L/s)	cfm (L/s)	cfm (L/s)	cfm (L/s)	cfm (L/s)
Supply High	734 (346)	707 (334)	674 (318)	635 (300)	590 (278)	539 (254)	481 (227)	418 (197)
Supply Med	537 (253)	474 (224)	413 (195)	354 (167)	295 (139)	239 (113)	183 (86)	129 (61)
Supply Low	415 (196)	342 (161)	272 (128)	202 (95)	135 (64)	69 (33)	-	-



ENERGY PERFORMANCE CORE*

	Net Air Flow		Net Effectiveness		Net Effectiveness		Net Effectiveness	
	L/s	CFM	Sensible	Latent	Sensible	Latent	Total	
HEATING								
	264	560	54	35			50	
	198	420	57	40			54	
COOLING								
	264	560	51	32			49	
	198	420	60	37			53	



*Actual performance may vary pending conditions

Quoted by:	Date:
Project:	Remarks:
Quantity:	
Model:	
Site:	
Architect:	
Engineer:	
Contractor:	