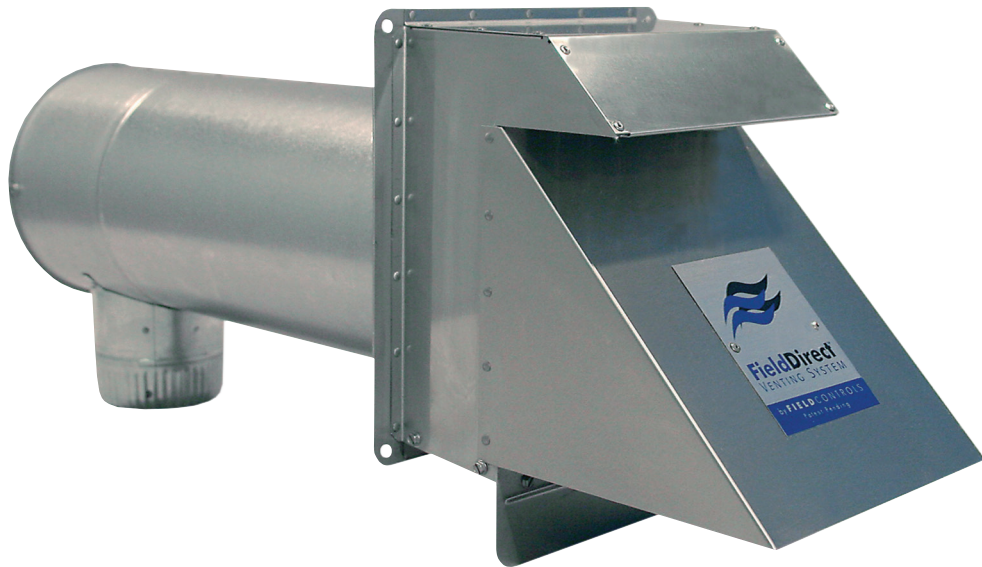


FIELD DIRECT VENT SYSTEM REDUCING TEE

Model: FDVS WITH REDUCING TEE



READ THESE INSTRUCTIONS CAREFULLY AND COMPLETELY BEFORE PROCEEDING WITH THE INSTALLATION.

This device **MUST** be installed by a qualified agency in accordance with the manufacturer's installation instructions. The definition of a qualified agency is: any individual, firm, corporation or company which either in person or through a representative is engaged in, and is responsible for, the installation and operation of HVAC appliances, who is experienced in such work, familiar with all the precautions required, and has complied with all the requirements of the authority having jurisdiction.

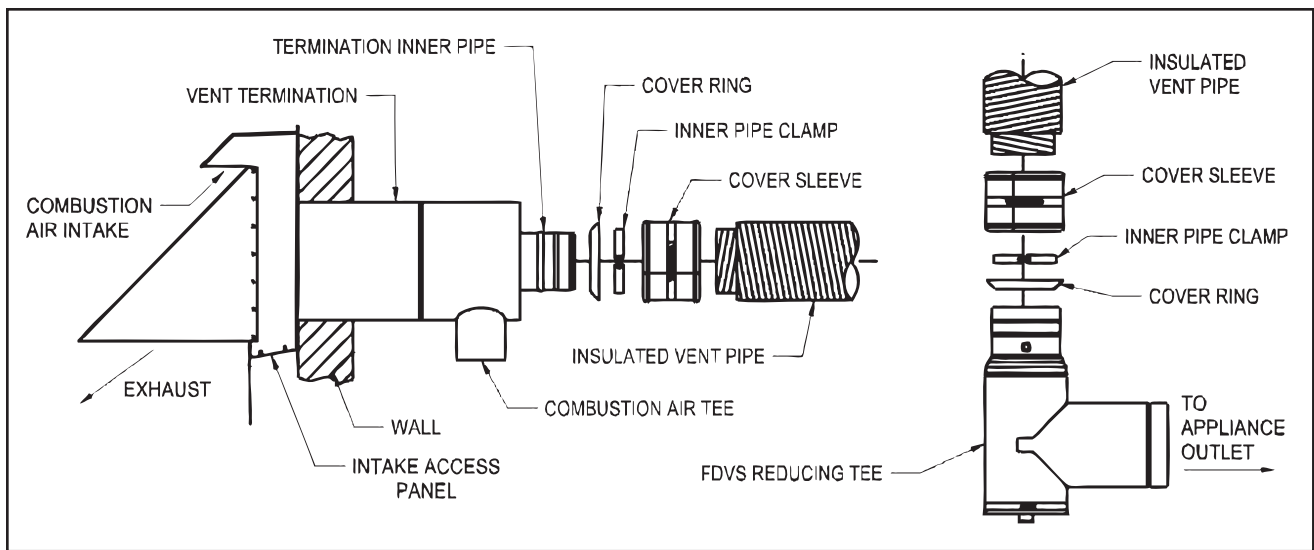
Please retain these instructions after installation.

Installed By: _____ Phone: _____ Installation Date: _____



FIELD CONTROLS

www.fieldcontrols.com



REDUCING TEE INSTALLATION

1. Apply a bead of sealant to appliance collar approximately 1" from end of collar. (See Figure 1)
2. Remove all oil and grease from the inside of the appliance reducing tee and apply a bead of sealant to inside of reducing tee 1/2" from end. (See Figure 1)
3. With a twisting motion, assemble the reducing tee firmly onto the appliance collar.
4. Push the reducing tee onto the appliance collar, using care to avoid damaging the appliance collar or the reducing tee. (See Figure 2)
5. Assemble clamp halves using the supplied 5/16" bolts and square nuts, and install the appliance clamp onto the reducing tee and tighten securely. (See Figure 1)
6. Install the supplied self-drilling, self-tapping anchoring screws through the 4 holes in the appliance clamp into the appliance collar. (See Figure 2) No pilot hole is required.
7. Apply sealant to the end of the reducing tee and anchoring screws. (See Figure 2)
8. After testing and burner adjustments have been made, apply sealant to the supplied 3/8" sampling port plug screw and install the screw in the sampling port. (See Figure 2)

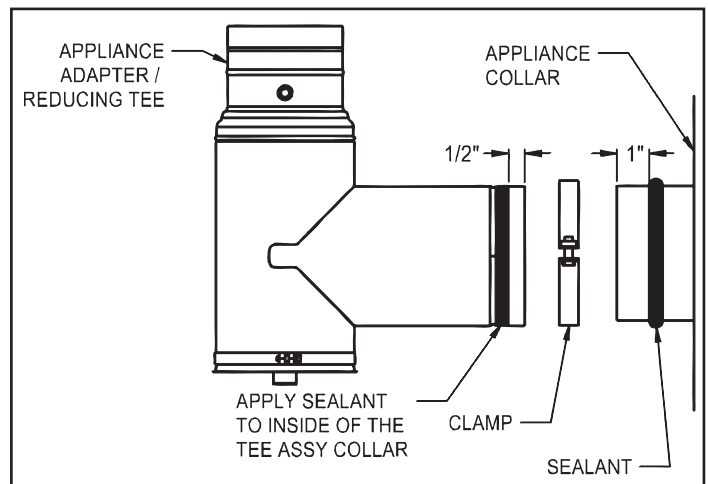


Figure 1

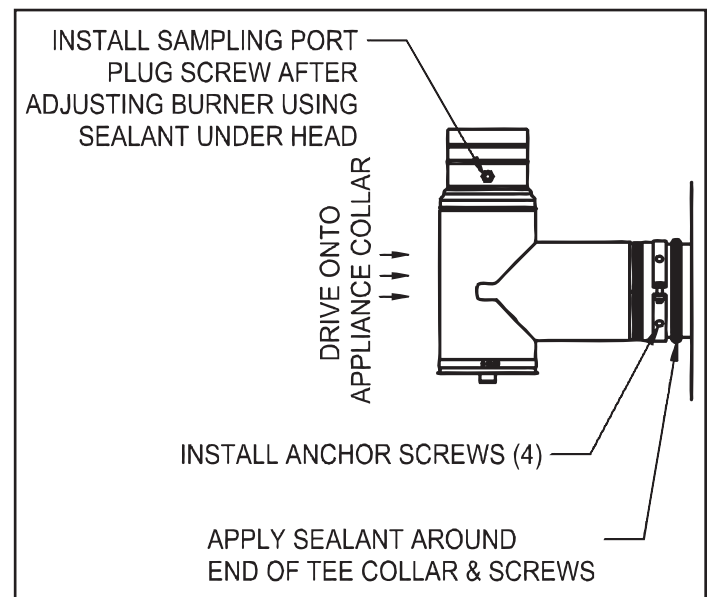


Figure 2

JOINT ASSEMBLY: VENT PIPE TO TERMINATION AND REDUCING TEE

If necessary, the vent pipe may be cut to length with a hacksaw or cut off saw.

CAUTION: Use safety glasses and other appropriate safety gear.

1. Pull outer vent pipe back 1-2" from inner vent pipe end and remove insulation. (See Figure 3)
2. Slide cover sleeve onto end of vent pipe a few inches back from end of outer vent pipe. (See Figure 3)
3. Slide cover ring over stop bead on termination inner pipe. (See Figure 3)
4. Assemble inner pipe clamp halves using the supplied $\frac{1}{4}$ " bolts and square nuts, and position inner pipe clamp $\frac{1}{4}$ " from end of inner pipe. (See Figure 3)
5. Remove all oil and grease from end of termination inner pipe and apply a bead of sealant between the stop bead and retainer bead. (See Figure 4)
6. Apply a thick bead of sealant to inside of inner vent pipe $\frac{1}{2}$ " from the end of pipe, working the sealant into the corrugations. (See Figure 4)
7. Push the inner vent pipe onto the termination inner pipe all the way up to the stop bead.
8. Tighten the inner pipe clamp bolts until both clamp halves are within $\frac{1}{8}$ " of each other at each end. (See Figure 5)
9. Slide the cover sleeve and cover ring together to engage the ring in the groove of the sleeve and tighten the cover sleeve clamp. (See Figure 6)
10. Repeat this procedure to install vent pipe on reducing tee.
11. To maintain 1" clearance to combustibles, wrap minimum $1\frac{1}{2}$ " thick ceramic insulation (installer-supplied) around the exposed portion of the termination inner pipe (See Figure 6), and secure with foil tape (installer supplied).

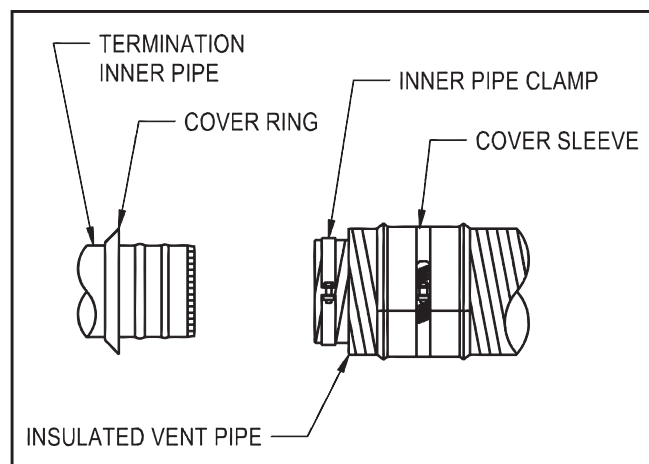


Figure 3

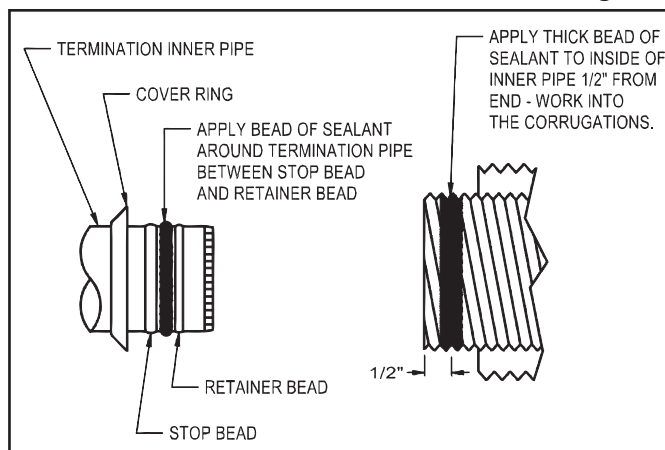


Figure 4

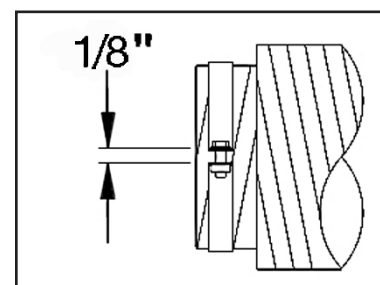


Figure 5

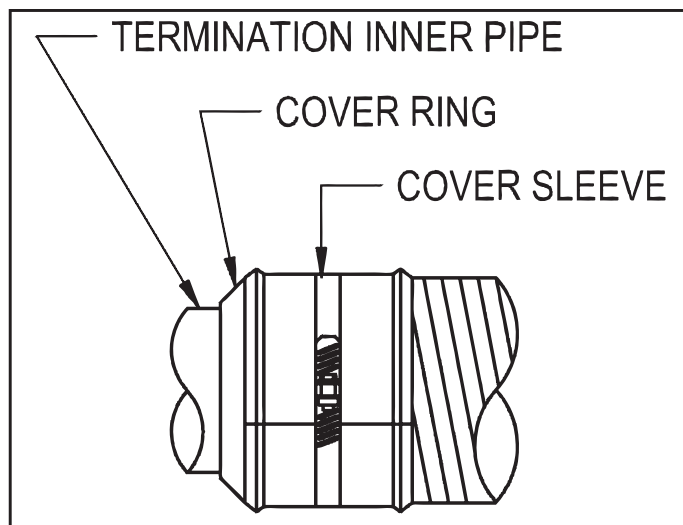


Figure 6

Warranty

For warranty information about this or any Field Controls product, visit:
www.fieldcontrols.com/warranty



FIELD CONTROLS

Phone: 252.522.3031 • Fax: 252.522.0214
www.fieldcontrols.com