

# ENGINEERING DATA



## VentCool Tahoe Series VentCool™ Whole House Fan



MODEL	PART NUMBER
<input type="checkbox"/> VentCool T2	602601026
<input type="checkbox"/> VentCool T3	602601036
<input type="checkbox"/> VentCool T4	602601046
<input type="checkbox"/> VentCool T5	602601056
<input type="checkbox"/> VentCool T6	602601066

### ITEMS INCLUDED IN KIT

- Fan assembly with electrical conduit box
- 7 feet of acoustically insulated flexduct
- Backdraft damper assembly
- Duct Adapter Assembly (as required)
- White cube core inlet grille with fasteners
- Control Package including: 8-hour electronic timer and 2-or-4 speed switch
- Instruction manual
- Installation hardware

### ELECTRICAL REQUIREMENTS

VentCool Models	Dedicated Circuit (Amps)	Voltage	Watts	Motor HP
T2	15	120v	279	1/3
T3	15	120v	341	1/3
T4	15	120v	667	1/2
T5	15	120v	781	1/2
T6	15	120v	857	1/3

### DESCRIPTION

VentCool™ Tahoe Whole House Fan (WHF) systems from Field Controls are designed to cool the interior of your homes HVAC air conditioning system thus reducing utility costs. System models are offered with AirLoc™ insulated gravity damper system. The AirLoc damper products are designed for warm weather regions and the PowerSeal damper products are designed for colder weather regions. All products are supplied with 120 VAC, 3-prong, 20 foot power cord and NEMA 5-15P plug.

### FEATURES

- Galvanized Steel fan housing
- Wall mounted electrical controls (time and fan speed)
- 7 feet of insulated, noise reducing flexduct
- Gravity damper
- All models designed to plug into 120 VAC, 15 amp, dedicated power, wall outlet or hard-wired to supplied wall-mount controls

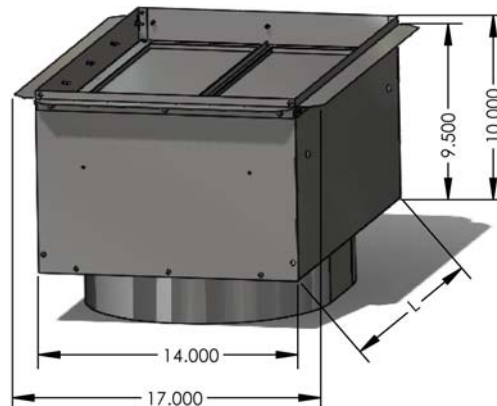
### BENEFITS

- Dramatic energy savings
- Permanent Split Capacitor (PSC) motors
- Ultra-quiet operation
- Convenient timer settings
- Easy installation
- Heavy Gauge Material

### PRODUCT OFFERING

VentCool Models	Fan Airflow CFM	Air Flow (CFM) per HVI-916 Std		Efficiency CFM/Watt	Sound Level (dBA)	Speed	Attenuated Acoustical Duct	Rough Opening	Grille Size (Inch x Inch)	Damper Blade R-Value	Attic Venting (Sq Ft)	Open Window (Sq Ft)
		Low	High									
VentCool T2	2604	2145	2191	7.9	54	2	16"x7ft	14.25x22.25	14x22	R - 5.0	4.4	10.4
VentCool T3	3418	2628	3009	8.8	53	2	18"x7ft	14.25x22.25	14x22	R - 5.0	6.1	12.0
VentCool T4	4740	2996	3750	5.6	56	2	20"x7ft	14.25x30.25	14x30	R - 5.0	7.5	15.0
VentCool T5	5614	3461	4476	5.7	59	2	20"x7ft	14.25x30.25	14x30	R - 5.0	9.0	17.9
VentCool T6	6145	4120	5400	6.3	60	4	(2) 16"x7ft	14.25x36.25	14x36	R - 5.0	10.8	21.6

### DIMENSIONAL DATA



Field Controls  
2630 Airport Road  
Kinston, NC 28504

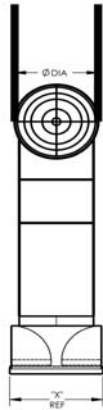
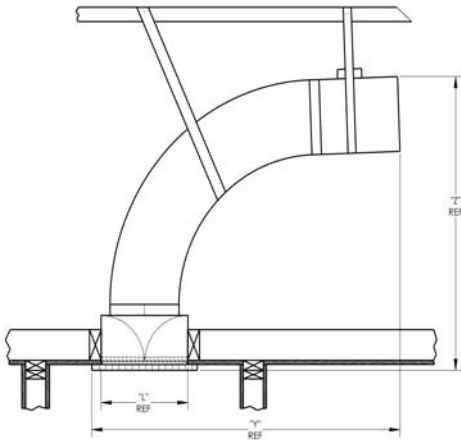
Customer Service: 252 522-3031  
Fax: 1 (800) 367-7942

Visit us at: [www.fieldcontrols.com](http://www.fieldcontrols.com)

Field Controls LLC reserves the right to modify a product, without prior notice, whether in design, color or specifications, in order to offer at all times a quality product that is highly competitive. Please consult your national and local building codes to find out whether the installation of electrical products requires the services of a certified technician or electrician. Field Controls and VentCool™ are registered Trademarks used under license by Field Controls LLC. All rights reserved.

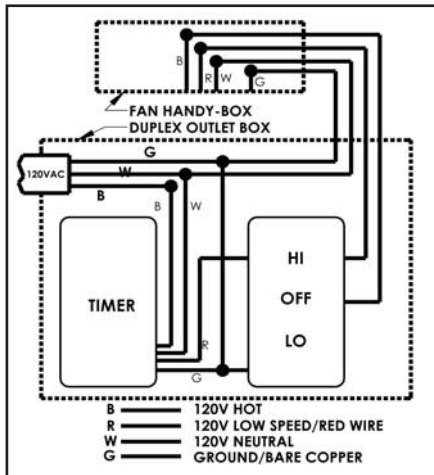
# ENGINEERING DATA VENTCOOL

DIMENSIONAL DATA - 1.8, 2.4, 2.5, 2.4, 3.5, 4.9 AND 5.0 (SEE CHART FOR DIMENSIONS)

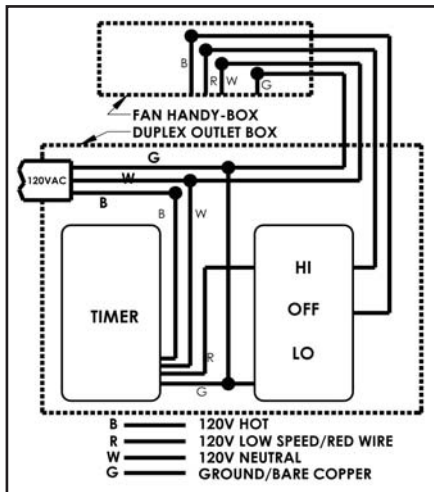


VentCool Models	Dimensions (in inches)				
	X (1)	Y (2)	Z (2)	L	DIA
VentCool T2	17	47	47	22	18
VentCool T3	17	47	47	22	18
VentCool T4	17	47	47	30	20
VentCool T5	17	47	47	30	22
VentCool T6 (3)	17	47	47	36	18

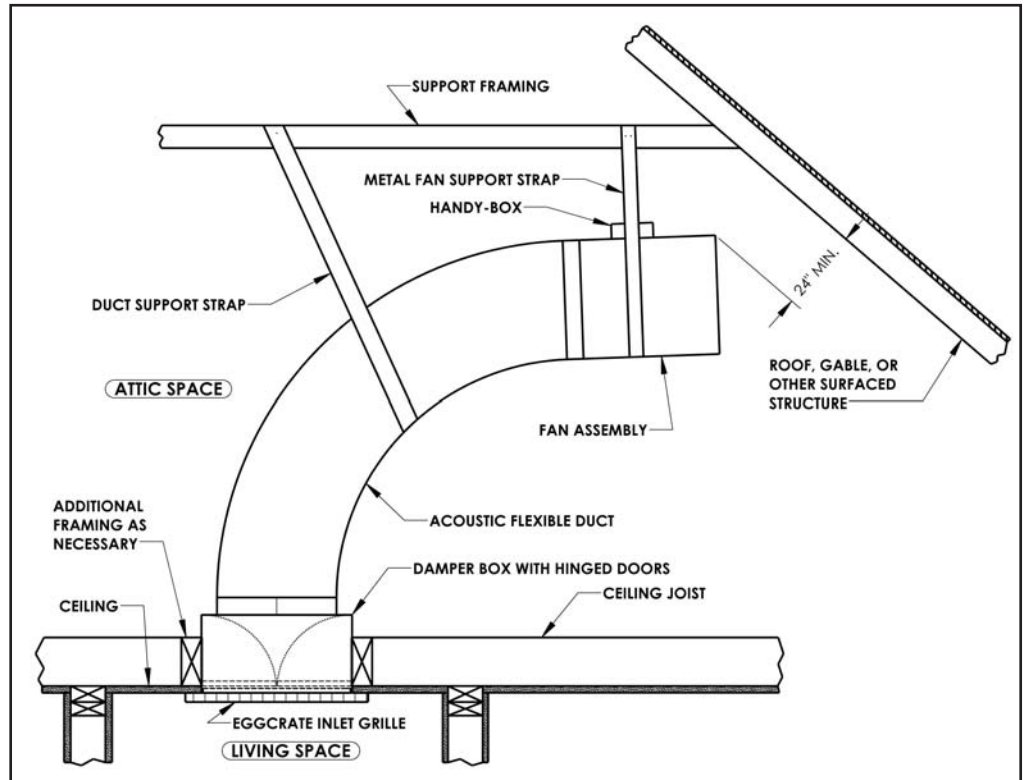
NOTE: 1. X includes flanged dimensions  
 2. Y and Z are dependent on bend radius. Duct supplied is 7 feet in length.  
 3. T6 includes two ducts and two fans.



ELECTRICAL - 2 SPEED CONTROL



ELECTRICAL - 4 SPEED CONTROL



TYPICAL INSTALLATION - VENTCOOL TAHOE SERIES

## PROJECT INFORMATION

Quoted by:	Date:
Project:	Remarks:
Quantity:	
Model:	
Site:	
Architect:	
Engineer:	
Contractor:	



Field Controls  
 2630 Airport Road  
 Kinston, NC 28504

Customer Service: 252 522-3031  
 Fax: 1 (800) 367-7942

Visit us at: [www.fieldcontrols.com](http://www.fieldcontrols.com)