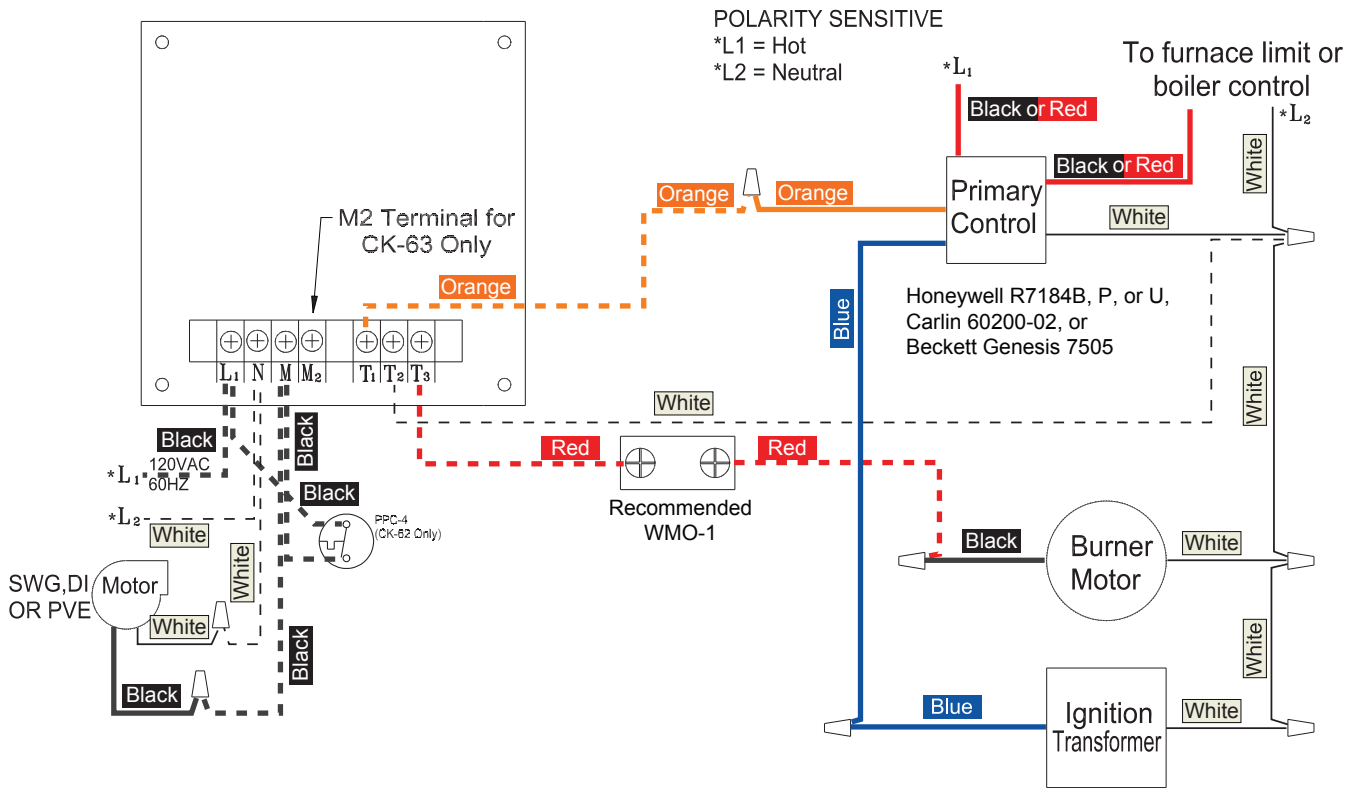


# Wiring Diagrams

for SWG, CV, DI, or PVE

CK-61, 62, 63 Series with Honeywell R7184B, P, or U, Carlin 60200-02, and Beckett Genesis 7505 Primary Control



POLARITY SENSITIVE

\*L1 = Hot  
\*L2 = Neutral

To furnace limit or boiler control

**Important Wiring Information:**  
Ensure motor and control kit are properly grounded to power source prior to energizing unit.

WARNING: Reversed polarity may cause equipment damage!

----- New wire supplied by installer

🗏 Solderless connector (wire nut)

- \* L1 is 120V
- \* N is 120V Neutral
- M is 120V if the motor is running
- T1 is 120V if there is a call for heat
- T2 is 120V Neutral
- T3 is 120V if there is a call for heat