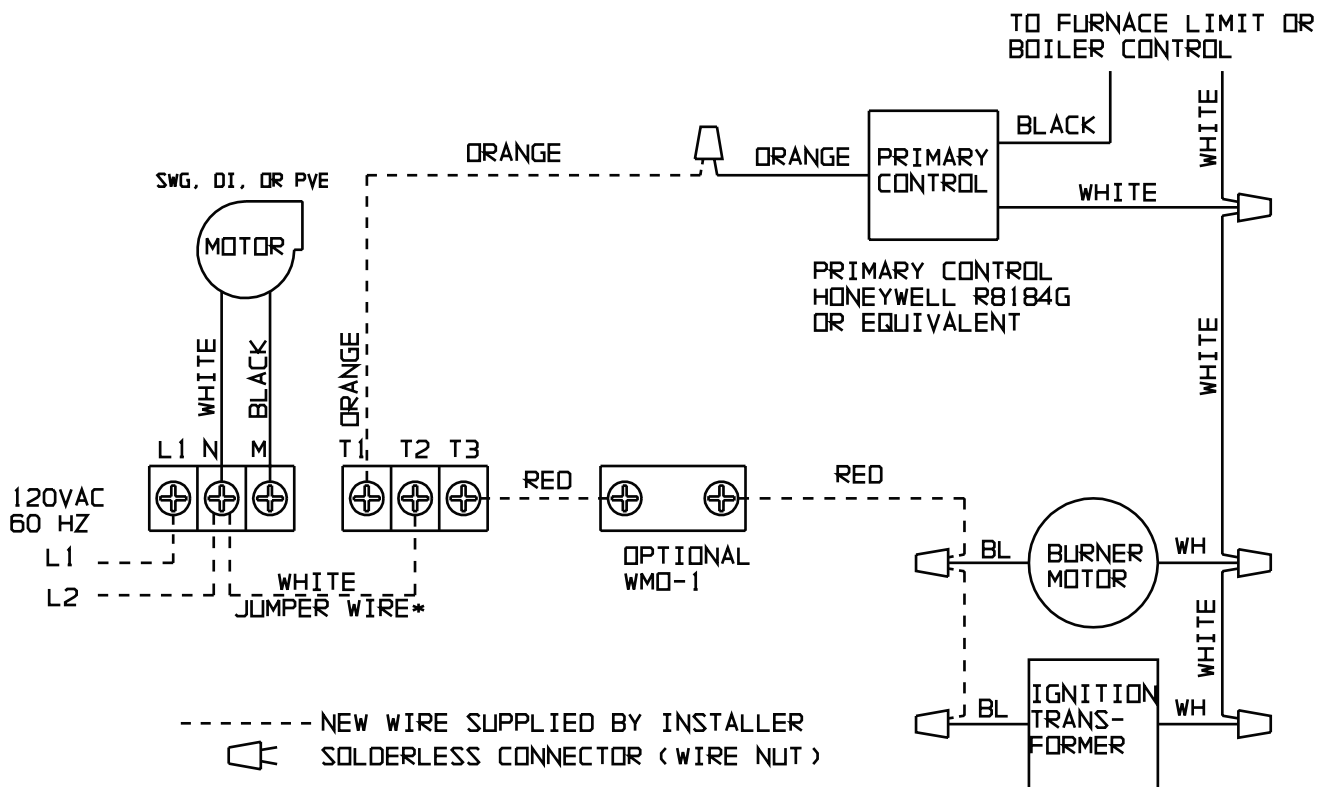


CK-61 or 63 for an Oil Fired Boiler, Furnace, or Water Heater (with standard primary control)



--- NEW WIRE SUPPLIED BY INSTALLER
 SOLDERLESS CONNECTOR (WIRE NUT)

*POWER SUPPLY WIRES MUST BE
 PROPERLY POLARIZED TO USE
 JUMPER WIRE HERE. EQUIPMENT
 DAMAGE MAY OCCUR IF NOT.