

ENGINEERING DATA VENTCOOL TAHOE SERIES



VentCool Tahoe Series

VentCool™ T1, T2, T3, T4, T5 Whole House Fan



MODEL	PART NUMBER
<input type="checkbox"/> VentCool T1	602601016
<input type="checkbox"/> VentCool T2	602601026
<input type="checkbox"/> VentCool T3	602601036
<input type="checkbox"/> VentCool T4	602601046
<input type="checkbox"/> VentCool T5	602601056

ITEMS INCLUDED IN KIT

- Fan assembly with electrical conduit box
- 7 feet of acoustically insulated flexduct
- Gravity damper assembly
- Duct Adapter Assembly (as required)
- White cube core inlet grille with fasteners
- Control Package including: 8-hour electronic timer and 1 or 2 speed switch
- Instruction manual
- Installation hardware

ELECTRICAL REQUIREMENTS

VentCool Models	Dedicated Circuit (Amps)	Voltage	Watts	Motor HP
T1	15	120v	203	1/4
T2	15	120v	279	1/3
T3	15	120v	341	1/3
T4	15	120v	667	1/2
T5	15	120v	781	1/2

OPTIONAL ACCESSORIES

- WiFi Control Kit 602601016
- Temperature Remote Control 602601026

DESCRIPTION

VentCool™ Tahoe Whole House Fan (WHF) systems from Field Controls are designed to cool the interior of your homes HVAC air conditioning system thus reducing utility costs. System models are offered with AirLoc™ insulated gravity damper system. The AirLoc damper products are designed for warm weather regions. All products are supplied with 120 VAC, 20 foot power cord with NEMA 5-15P plug.

FEATURES

- Galvanized Steel fan housing
- Wall mounted electrical controls (time and fan speed)
- 7 feet of insulated, noise reducing flexduct
- Gravity damper
- All models designed to plug into 120 VAC, 15 amp, dedicated power, standard wall outlet or directly hard-wired to supplied wall-mount controls
- Removable plaster guards

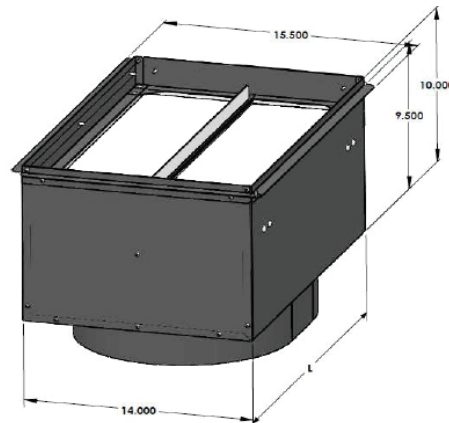
BENEFITS

- Dramatic energy savings
- Permanent Split Capacitor (PSC) motors
- Ultra-quiet operation
- Convenient timer settings
- Easy installation
- Heavy Gauge Material

PRODUCT OFFERING

VentCool Models	Fan Airflow CFM	Air Flow (CFM) per HVI-916 Std		Efficacy CFM/Watt	Efficiency Watt/CFM	Sound Level (dBA)	Speed	Attenuated Acoustical Duct	Rough Opening	Grille Size (Inch x Inch)	Damper Blade R-Value	Attic Venting (Sq Ft)	Open Window (Sq Ft)
		Low	High										
VentCool T1	1992	--	1583	7.798	0.128	52	1	16"x7ft	14.25x22.25	16 X 22	R- 5.0	3.2	6.4
VentCool T2	2369	1868	1932	6.560	0.153	54	2	16"x7ft	14.25x22.25	16 X 22	R- 5.0	3.9	7.7
VentCool T3	3339	2324	2759	7.880	0.127	53	2	18"x7ft	14.25x22.25	16 X 22	R- 5.0	5.5	11.0
VentCool T4	4590	3216	3640	8.465	0.118	56	2	20"x7ft	14.25x30.25	16 X 30	R- 5.0	7.3	14.6
VentCool T5	5902	2768	4123	6.544	0.153	59	2	20"x7ft	14.25x30.25	16 X 30	R- 5.0	8.2	16.4

DIMENSIONAL DATA



Field Controls
2630 Airport Road
Kinston, NC 28504

Field Controls
9154 Stellar Court
Corona, CA 92883

252 522-3031
Fax: 1 (800) 367-7942

951-277-0304

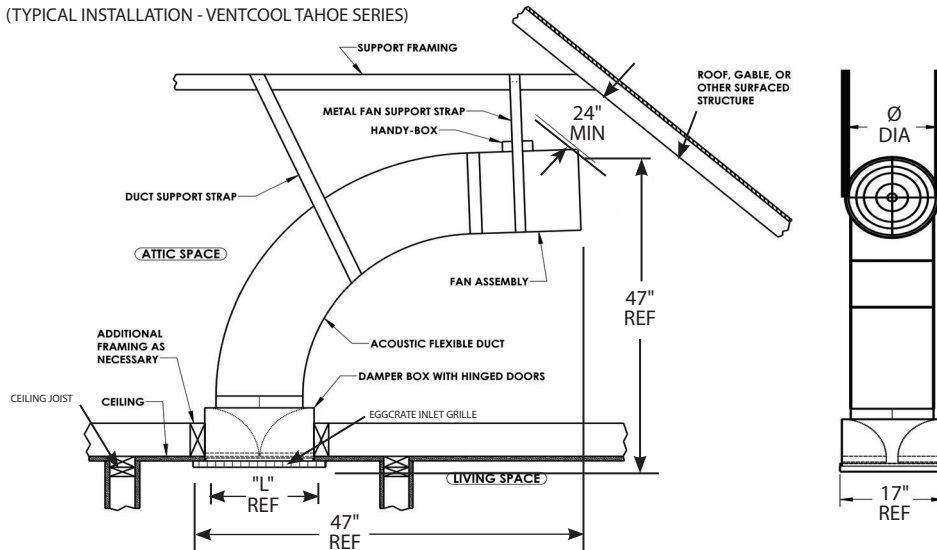
Visit us at: www.fieldcontrols.com

Field Controls LLC reserves the right to modify a product, without prior notice, whether in design, color or specifications, in order to offer at all times a quality product that is highly competitive. Please consult your national and local building codes to find out whether the installation of electrical products requires the services of a certified technician or electrician. Field Controls and VentCool™ are registered Trademarks used under license by Field Controls LLC. All rights reserved.

ENGINEERING DATA VENTCOOL TAHOE SERIES

DIMENSIONAL DATA

(TYPICAL INSTALLATION - VENTCOOL TAHOE SERIES)



VentCool Models	Dimension (in inches)	
	L	DIA
VentCool T1	22	16
VentCool T2	22	18
VentCool T3	22	18
VentCool T4	30	20
VentCool T5	30	22

NOTE: 1. 17" measurement includes flanged dimensions
2. 47" measurements are dependent on bend radius. Duct supplied is 7 feet in length.

Diagram A:
HARDWIRED
FOR
T2-T5 ONLY
WITH
2 SPEED
OPERATION

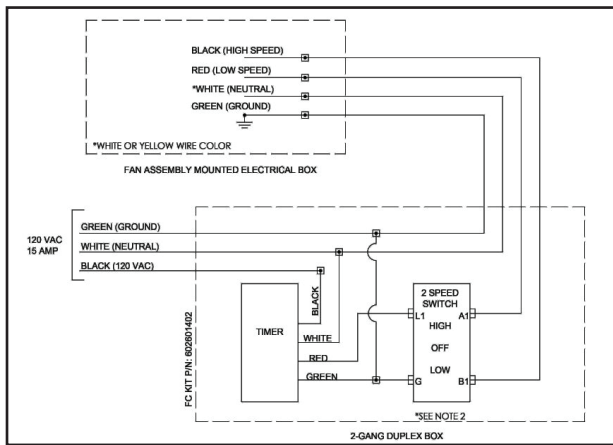


Diagram B:
HARDWIRED
FOR
T1 ONLY

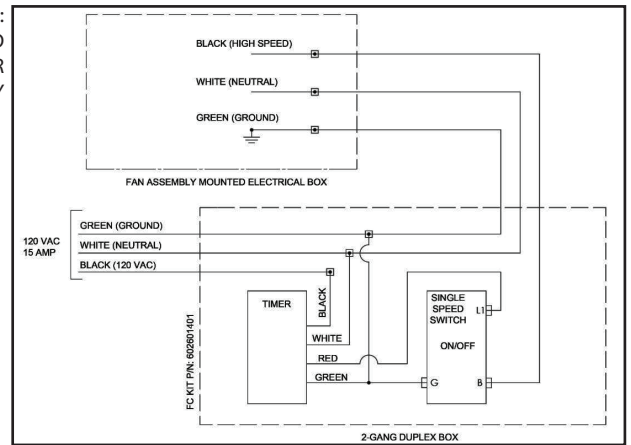


Diagram C:
POWER
CORD FOR
T2-T5 ONLY
WITH
2 SPEED
SWITCH
FOR SINGLE
SPEED
OPERATION

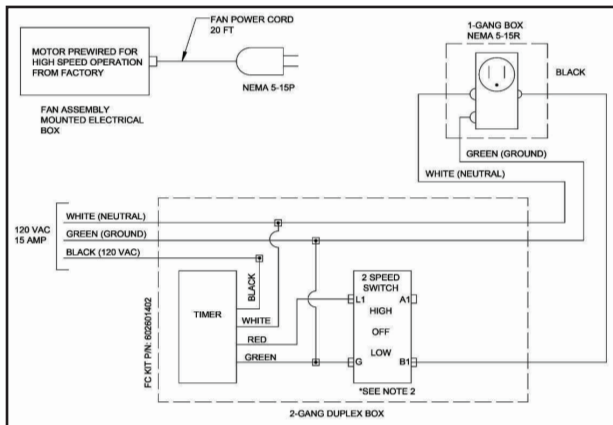
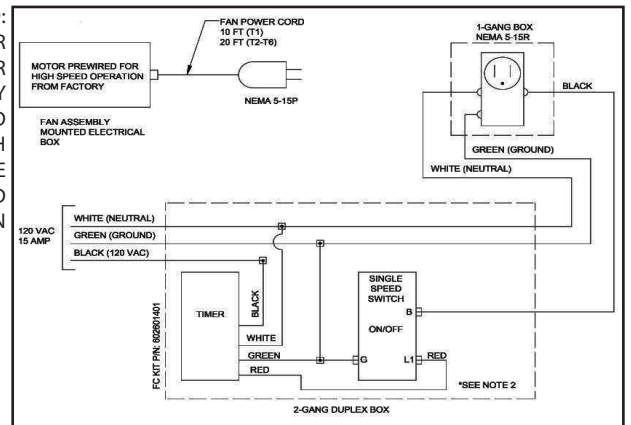


Diagram D:
POWER
CORD FOR
T1-T5 ONLY
WITH 1 SPEED
SWITCH
FOR SINGLE
SPEED
OPERATION



PROJECT INFORMATION

Quoted by:	Date:
Project:	Remarks:
Quantity:	
Model:	
Site:	
Architect:	
Engineer:	
Contractor:	



Field Controls
2630 Airport Road
Kinston, NC 28504
252 522-3031
Fax: 1 (800) 367-7942

Field Controls
9154 Stellar Court
Corona, CA 92883
951-277-0304

Visit us at: www.fieldcontrols.com