

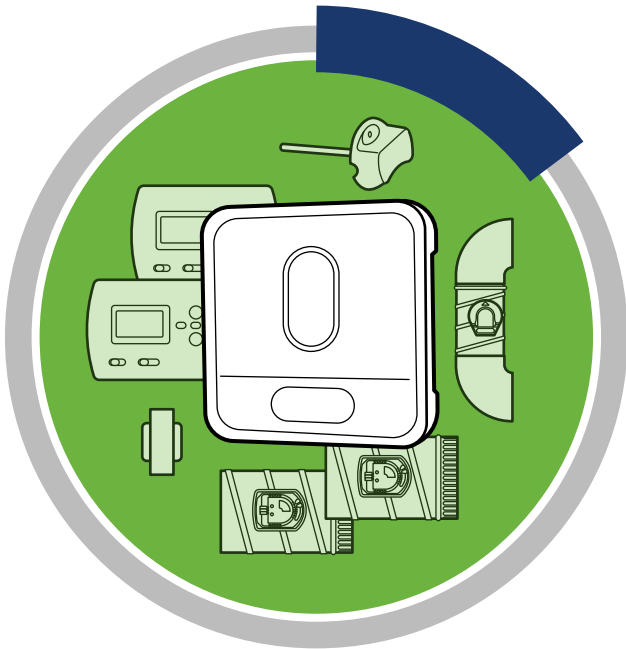


# WHOLE HOUSE COMFORT FOR A WHOLE LOT LESS

EvenAir is a Whole House Comfort Control System that modulates air delivery to balance temperatures throughout your home for EvenAir Comfort. Compared to a traditional zoning system, EvenAir offers a savings in material costs and labor costs. EvenAir also requires less HERS testing. Not only does EvenAir provide your customers true comfort, it is also a more energy efficient solution.

**8-10%**

SAVINGS IN MATERIAL



**10-15%**

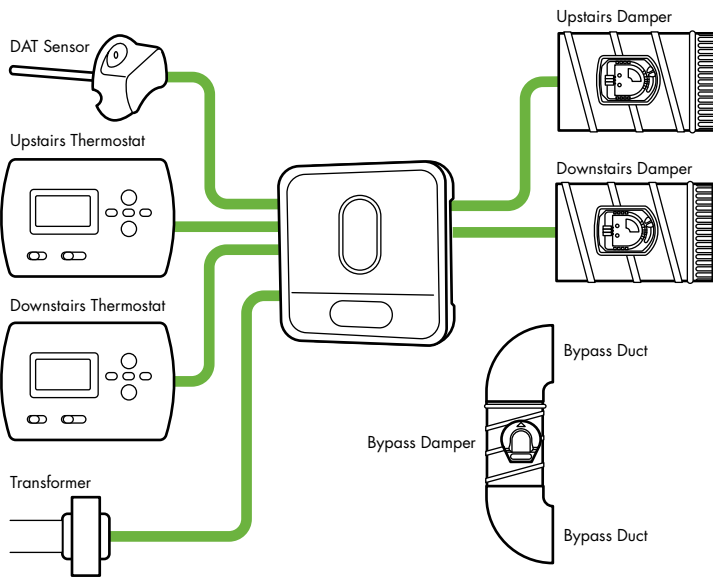
SAVINGS IN LABOR



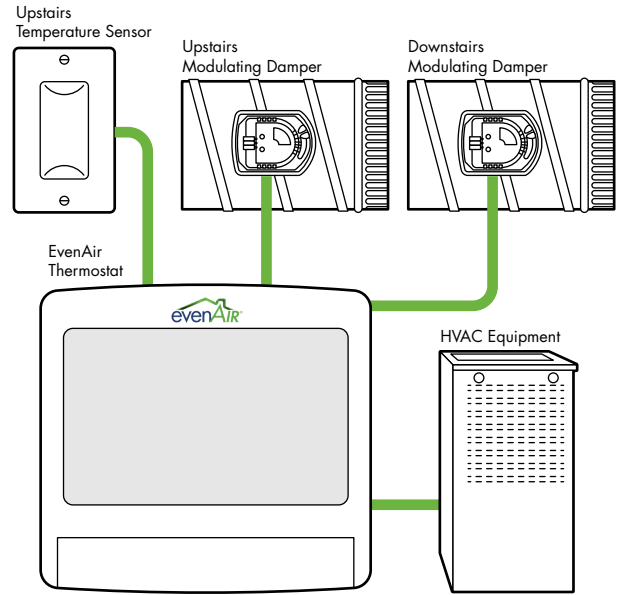
# EVENAIR MATERIAL COST SAVINGS

For Residential New Construction, EvenAir uses fewer components. EvenAir uses a thermostat located in the downstairs living area, one or two temperature sensors in the upstairs sleeping area, and two modulating dampers to control the airflow to the sleeping and living areas.

## ZONING SYSTEM



## EVENAIR SYSTEM



## EVENAIR REDUCES HERS TESTING

The EvenAir installation is tested the same as traditional single-thermostat installation. Quite often a zoning installation fails an airflow test. The EvenAir installation never fails.

### HERS TESTING REQUIREMENTS

ZONING SYSTEM	EVENAIR
Airflow is tested with both zone dampers fully open.	Airflow is tested with both dampers fully open.
Airflow is tested with the upstairs zone dampers fully open and the downstairs fully closed.	
Airflow is tested with the downstairs zone dampers fully open and the upstairs fully closed.	

## EVENAIR LABOR SAVING

EvenAir reduces the number of wires to be connected to 13. A traditional zoning system has 25 connections. EvenAir eliminates installation of the 24VAC transformer and electrical box for the transformer. It eliminates installation of the zoning panel and discharge air sensor. There is also no need to install bypass ducts and bypass dampers. No need to calibrate bypass damper either.