

INSTALLATION AND USER MANUAL

VentCool® WLM-RTT

WHOLE HOUSE FAN WIRELESS REMOTE AND PLUG-IN MODULE



The VentCool whole house fan remote control and plug-in module is an add-on to be used with a WTT wall control. The remote control uses temperature or a timer to control the whole house fan. The wireless plug-in module is installed in the back of the WTT wall control.

In temperature control mode, the homeowner turns on the whole house fan and sets the comfort temperature. The VentCool whole house fan will cool the home until the indoor temperature drops just below the comfort temperature then turn off. A built-in safety timer will turn the fan off the following morning in case the homeowner forgets. In timer control mode, the homeowner turns the fan on and sets the timer interval. The fan will run for the time set then turn off. The RTT wireless remote is also used to adjust the fan speed.

COMPONENTS:

- 1 - VentCool RTT Whole House Fan Wireless Remote [RTT] (p/n 580011706)
- 1 - VentCool WLM Plug-In Wireless Module [WLM] (p/n 580011707)
- 1 - AAA Battery kit.
- 1 - Installation and User Manual (780104505)

***A VentCool Wall Control [WTT] p/n (580022703) must be installed for this plug-in module and wireless remote to function properly.*

READ THESE INSTRUCTIONS CAREFULLY AND COMPLETELY BEFORE PROCEEDING WITH THE INSTALLATION.

This device **MUST** be installed by a qualified agency in accordance with the manufacturer's installation instructions. The definition of a qualified agency is: any individual, firm, corporation or company which either in person or through a representative is engaged in, and is responsible for, the installation and operation of HVAC appliances, who is experienced in such work, familiar with all the precautions required, and has complied with all the requirements of the authority having jurisdiction.

Please retain these instructions after installation.

Installed By: _____ Phone: _____ Installation Date: _____



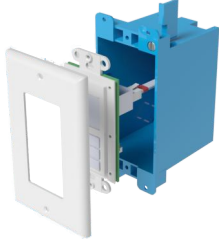
INSTALLATION SECTION

This manual is separated into two different sections: one for the Homeowner and one for the Installer. The Homeowner section contains information on features and operation of the wall control.

Step 1. Power the RTT

Use the pull tab on the back of the RTT Wireless Remote to activate the AAA batteries already installed. You should see the LCD display. When the wireless remote is moved, the LCD lights up.

Step 2. Detach Wall Plate and WTT

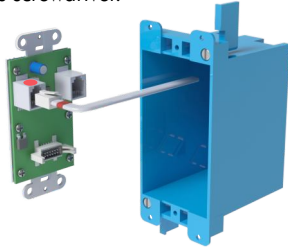


Make sure the fan is OFF.

Unscrew the wall plate screws using a slotted screwdriver.

Unscrew the WTT screws using a phillips screwdriver.

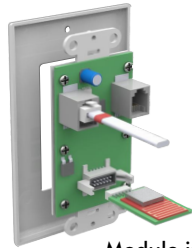
Gently pull the WTT wall control away from the wall. If needed, you can remove the low voltage plug&play cable from the red connector.



Step 3. Install the WLM Plug-In Module

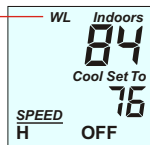
Make sure the Plug-In Module is oriented with the RED side up as illustrated. Use the guide to insert the module.

If the red plug&play cable was removed, reconnect the cable into the red connector. The LCD display should be lit. If not, check the connector.



Module is RED side up.

Verify that WL is flashing. This indicates that the WLM module is plugged into the WTT correctly. If WL is not flashing, verify that the WLM is oriented correctly (RED side up) and that it's plugged in completely.



Step 4. Reattach the WTT and Wall Plate


Reattach the wall control to the plastic gang box.

Reattach the wall plate to the wall control.




Step 5. Link the RTT and the Wall Control

At the WTT Wall Control

PRESS and HOLD **MODE** for about 7 seconds until STimer is displayed. PRESS **MODE** until WL OFF is displayed. PRESS  to select ON.

At the RTT Wireless Remote

PRESS and HOLD **MODE** for about 7 seconds until STimer is displayed. PRESS **MODE** until WL OFF is displayed. PRESS  to select ON.

Once the WTT Wall Control and the RTT Wireless Remote are linked, WL will stop blinking and go solid.

HOMEOWNER SECTION

This manual is separated into two different sections: one for the Homeowner and one for the Installer. The Homeowner section contains information on features and operation of the wall control.

Things to Know

- When running your whole house fan, remember to open windows prior to operation.
- The Wireless Remote features a motion activated digital display that lights up and updates as soon as it's lifted. You may hear the mechanism for the motion detection (a small ball bearing) when you move the wireless remote.
- When you turn the fan on or off or change settings using the WTT Wall Control, the RTT Wireless Remote settings are updated to reflect the settings in the WTT as soon as the remote is lifted.
- When you turn the fan on or off or change settings using the RTT Wireless Remote, the WTT Wall Control settings are updated to reflect the settings in the RTT as soon as the RTT backlight goes off.
- Two "starter" AAA alkaline batteries are included. It's highly recommended that Lithium batteries be used for a much longer battery life.
- Wireless range is about 100 feet within the home.
- Homes with plaster walls with steel lathe may experience wireless communication interference when using wireless control.

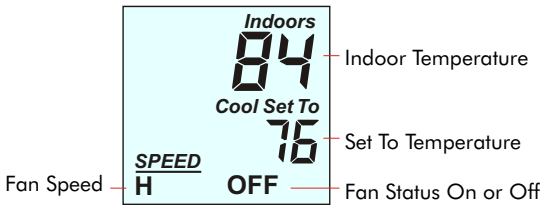
HOMEOWNER SECTION

Before operating your whole house fan, be sure to open windows and close fireplace dampers. Refer to your whole house fan manual for more information regarding operating your fan.

The RTT Wireless Remote works just like the WTT wall control and controls the whole house fan using temperature or timer control from anywhere in your home. Temperature control optimizes your comfort and energy savings by never overcooling your home and only running the fan when needed.

The RTT defaults to Temperature Control.

Temperature Control



Turn the Fan On

PRESS **ON/OFF** to display ON. The fan will run (ON blinking) when the Set To Temperature is below the Indoor Temperature.

Adjust the Cool Set To (Comfort) Temperature

PRESS and HOLD **▲** or **▼** to adjust the Set To Temperature.

When the Set To Temperature is lower than the indoor temperature, the fan is On and running (ON blinking). When the Set To Temperature is above the indoor temperature, the fan is not running (ON is not blinking).

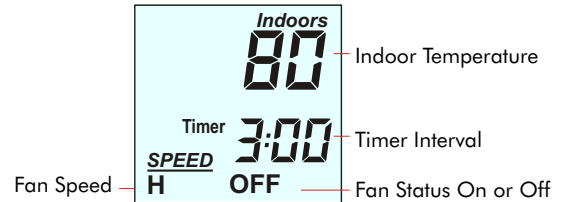
Safety Features in Temperature Control

The RTT On/Off key has to be pressed to turn the fan On. In addition, there is a built in safety timer that will automatically turn the fan off after 8 hours in case the homeowner forgets.

Adjust the Safety Timer Hours

PRESS and HOLD **MODE** for 7 seconds until STimer is displayed. PRESS and HOLD **▲** or **▼** to adjust the safety timer hours from 1 to 12 hours.

Timer Control



Switch To Timer Control

PRESS **MODE** then PRESS **▲** to select Timer Control. To return to Temperature Control, press **MODE** then press **▼**.

Turn the Fan On

PRESS **ON/OFF** to turn the fan ON. The fan will run for the timer interval displayed.

PRESS and HOLD **▲** or **▼** to adjust the current Timer Setting. Or, to set your preferred Timer Setting, turn the fan Off and PRESS and HOLD **▲** or **▼** to adjust the timer setting. This timer setting will be used each time the fan is turned on.

Adjusting the Fan Speed

PRESS **SPEED** then PRESS and HOLD **▲** or **▼** to adjust the fan speed. Available fan speeds depends on the type of fan installed.

1-Speed Fan

Homeowner can select High (H) only. **SPEED H**

2-Speed Fan

Homeowner can select High (H) or Low (L). **SPEED H SPEED L**

3-Speed Fan

Homeowner can select High (H), Medium (M) or Low (L). **SPEED H SPEED M SPEED L**

Note: The WTT wall control is factory set for 2 speed operation out of box from factory. If you have a 3-speed fan but can only select High (H) or Low (L), the number of fan speeds may not have been set properly. Refer to Step 5, Set The Number of Fan Speeds, in the installer section of the WTT manual.

MAINTENANCE AND TROUBLESHOOTING

The RTT LCD is dim or not lit.

The batteries likely need to be changed. See Changing Batteries below.

RTT was dropped and is no longer working.

A replacement RTT can be ordered by contacting customer service. The replacement RTT is linked to the WTT using Step 5 on page 3.

The display indicates On but the fan is not running.

If On is not blinking and the RTT is in Temperature Control, make sure the Set To temperature is a few degrees lower than the Indoor temperature. On will blink when the fan is running.

If an outdoor temperature sensor is installed and the outdoor temperature is above the limit set, whole house fan operation may be delayed. When delayed, "LIMIT" blinks.

If On is blinking but the fan is not running, check the wiring from the FC3JF fan control to the whole house fan.

Changing the Batteries

When the LCD is dim or unlit, it's time to change the two AAA batteries.

It's highly recommended that the "starter" AAA alkaline batteries be replaced with AAA Lithium batteries for longer battery life.

Unscrew the four screws on the back of the RTT and remove the back cover. Change the batteries. Replace the back cover and secure with the screws.

SPARE PARTS AND ACCESSORY LIST

Field Controls Part Number	Model Number	Description
580011702	WTT	Whole House Fan Wall Control with Temperature, Timer and Speed Control. For 1, 2 or 3-Speed PSC or ECM fans. Includes 50 FT plug&play cable and hardware kit.
580011701	FC3JF	Whole House Fan Control Board. For 1, 2 or 3-Speed PSC or ECM fans.
580011704	WLM-RTT	Wireless Remote Control Upgrade Kit. Includes WLM Wireless Plug-In Module and RTT Wireless Remote Control.
580011706	WLM	Replacement WLM wireless plug-in module.
580011707	RTT	Replacement RTT wireless remote control.
580011550	PNP50	Cable 50 FT PNP50 VentCool

This manual may be downloaded and printed from the Field Controls website (www.fieldcontrols.com)

WARRANTY

For warranty information about this or any Field Controls product, visit:
www.fieldcontrols.com

Field Controls Technical Support
1.800.742.8368
fieldtec@fieldcontrols.com

Field Controls Customer Service
1.252.522.3031
sales@fieldcontrols.com



9154 Stellar Ct
Corona, CA 92883

Phone: 252.522.3031 • Fax: 252.522.0214
www.fieldcontrols.com

2630 Airport Road
Kinston, NC 28504