

ENGINEERING DATA



Model C-Sensor

C-Sensor Make-up Air Sensor

Part No. 46676600



ITEMS INCLUDED IN KIT

- Model C-Sensor Electronic Makeup Air Sensor, with electrical junction box
- (2) wiring strain reliefs

DESCRIPTION

The C-Sensor senses the operation of air-exhausting devices (such as range hoods, dryers, bathroom fans, central vacuum systems etc.), and acts as a switch to provide a 24 VAC input signal to the HHSC+ Ventilation Control, which then operates the FAD fresh air damper and activates the HVAC central fan, to draw air into the house and provide makeup air for the exhausting device.

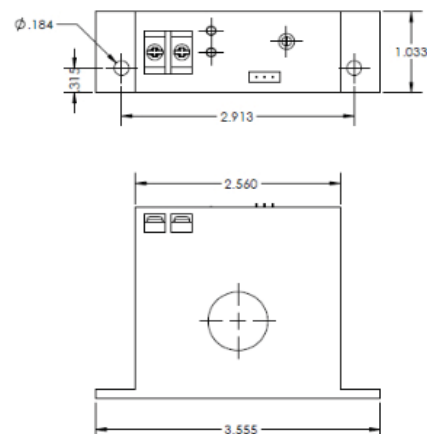
Upon sensing electrical current used by the exhausting device above the setpoint as adjusted, the C-Sensor provides a low-voltage, low-current signal to the HHSC+ and/or optional E-Sensor. The C-Sensor is powered by the sensed current in the electrical circuit feeding power to the exhausting devices, and is adjustable within a sensing range of 1-50 Amperes without requiring an external power supply. The make-up air function may or may not override the E-Sensor or T-Sensor ventilation inhibiting function, depending on the wiring configuration chosen by the installer.

The C-Sensor may also be used in a stand-alone makeup air system to control a 24V fresh air damper and/or fan that is ducted to the outdoors, when used with compatible relays.

FEATURES

- Adjustable current set-point allows sensor to ignore low-flow conditions when make-up air may not be necessary (example: under 400 cfm)
- Wide range of set point adjustability: from 1 to 50 Amps
- Red and Green LEDs indicate on/off status of output
- Electronically compatible with HHSC+ ventilation control inputs, and E-Sensor and T-Sensor inputs
- No external power required
- UL/CSA listed

DIMENSIONAL DATA



Field Controls
2630 Airport Road
Kinston, NC 28504

Customer Service: 252 522-3031
Fax: 1 (800) 367-7942

Visit us at: www.fieldcontrols.com

Field Controls LLC reserves the right to modify a product, without prior notice, whether in design, color or specifications, in order to offer at all times a quality product that is highly competitive. Please consult your national and local building codes to find out whether the installation of electrical products requires the services of a certified technician or electrician. Field Controls and Healthy Home System™ are registered Trademarks used under license by Field Controls LLC. All rights reserved.

ENGINEERING DATA C-SENSOR

PRODUCT SPECIFICATIONS

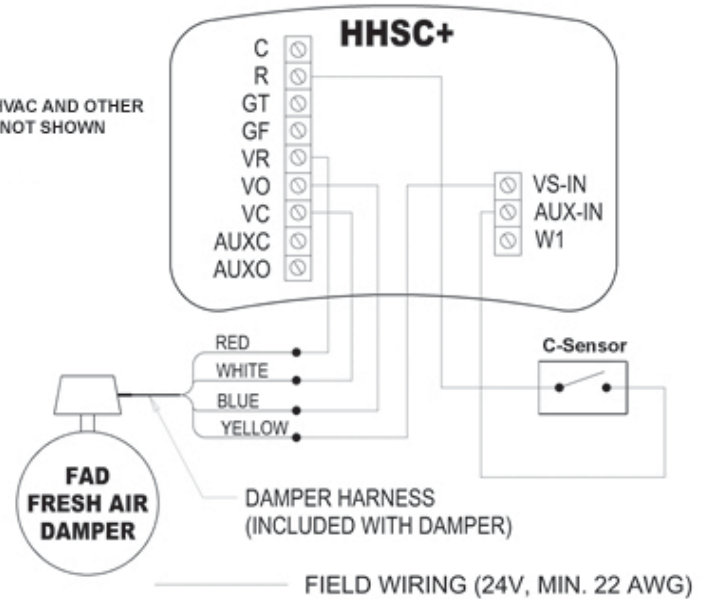
Switch: 0.3A @ 135V AC/DC

Monitor Range: 1-200A

Current Sensor Type: Fixed Core

TYPICAL WIRING DIAGRAM

*NOTE: HVAC AND OTHER
WIRING NOT SHOWN



MAKE-UP WIRING CONFIGURATION

Sensing Device Connection	System Operation Upon Sensing Makeup Air Demand	Application Notes
HHSC+ Control, C-Sensor and FAD Wiring Diagram	The HHSC+ sends fan-on override command to HVAC circulation fan, sends command to open FAD damper. The C-Sensor allows the FAD damper to open for makeup air regardless of outdoor conditions. The C-Sensor will command the FAD damper to open, regardless of outdoor conditions and status of HHSC+ and HVAC circulation fan.	Makeup Air will be actively forced into the house, regardless of outdoor conditions.

PROJECT INFORMATION

Quoted by:	Date:
Project:	Remarks:
Quantity:	
Model:	
Site:	
Architect:	
Engineer:	
Contractor:	



FIELD CONTROLS
Improving Indoor Environments

Field Controls
2630 Airport Road
Kinston, NC 28504

Customer Service: 252 522-3031
Fax: 1 (800) 367-7942

Visit us at: www.fieldcontrols.com