

ENGINEERING DATA



Model: FCD

Fresh Command Ventilation System w/ Damper 4" - 12" Models

Part No. 603604104, 603604105, 603604106, 603604107, 603604108, 603604109, 603604110 and 603604112



DESCRIPTION

The FCD is an intelligent, automatic, year-round ventilation system that integrates with an existing HVAC system and thermostat to meet ASHRAE 62.2 requirements.

ITEMS INCLUDED IN KIT

- FAD Damper, 4" through 12" size
- Fresh Command MultiFamily Control (FCMC)
- Mounting Hole Template
- Instruction Manual
- Mounting Packet containing Sheet Metal Screws

FAD FEATURES

- Power-Open, Power Close
- Very low power requirement
- Very low air flow resistance
- Stainless steel body and gate
- Tear-resistant closed-cell foam rubber seal tested 500K+ cycles
- Seal flammability meets FMVSS-302
- Gas Vent Damper motor and circuit board certified 100K+ cycles

FCMC FEATURES

- Complies to ASHRAE 62.2 with built-in calculations for easy setup and installation
- Auto-senses 8 key factors at startup to balance temperature and humidity regardless of climate zone
- Built-in temperature and humidity sensors with no additional wiring needed
- Quick-Start Test feature for an immediate test cycle
- Fast Click, lock cover deters tenant or renter interference
- Seeks to ventilate with a heating or cooling call for optimal comfort and efficiency
- One dial to adjust intermittent ventilation
- On/off switch with easy access that does not require cover removal

FAD PRODUCT SPECIFICATIONS

Housing Material: 22 gage stainless steel
 Seal Material: 1/16" cross-linked polyethylene
 Voltage: 18-30 VAC, 24VAC nominal
 Maximum Operating Current 0.1 Amps
 Power Draw Requirement: 3W at 24VAC when opening or closing
 Timing: 15 seconds Power open, 15 seconds Power close
 Operating Ambient Temperature Range: -20°F to 150°F (0°C to 60°C)
 Operating Humidity Range: 5 to 90% RH (non-condensing)
 Shipping Temperature Range: -20°F to 160°F (-29°C to 71°C)
 Recommended Max Velocity: 1000 ft/min
 Recommended Max Pressure Differential: 1.0"wc
 Leakage: under 0.5% at 0.5"wc
 Mounting Restrictions: None, recommended motor at 12:00 if horizontal

FCMC PRODUCT SPECIFICATIONS

Power Requirements (Class 2 Appliance)

Power	
Input Voltage	16-32 VAC
Full Load Power	1.28W 27.4VAC
Idle Power	270mW @ 27.4 VAC
Wiring Requirements	18-22 AWG, 24 VAC (Min)
Operating Temperature Range	10°F to 160°F
Operating Humidity Range	5 to 95% RH (non-condensing)

Outputs	
Fan Output GF (Maximum Load Current)	8A inductive @30VAC
Vent (V,V) (Maximum Load Current)	8A inductive @30VAC, or 30ADC



Field Controls
 2630 Airport Road
 Kinston, NC 28504
 252 522-3031
 Fax: 1 (800) 367-7942



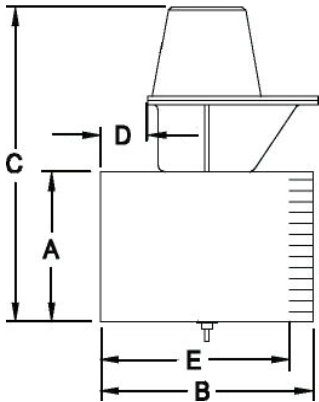
Visit us at: www.fieldcontrols.com

Field Controls LLC reserves the right to modify a product, without prior notice, whether in design, color or specifications, in order to offer at all times a quality product that is highly competitive. Please consult your national and local building codes to find out whether the installation of electrical products requires the services of a certified technician or electrician. Field Controls is a registered Trademark used under license by Field Controls LLC. All rights reserved.

ENGINEERING DATA FCD

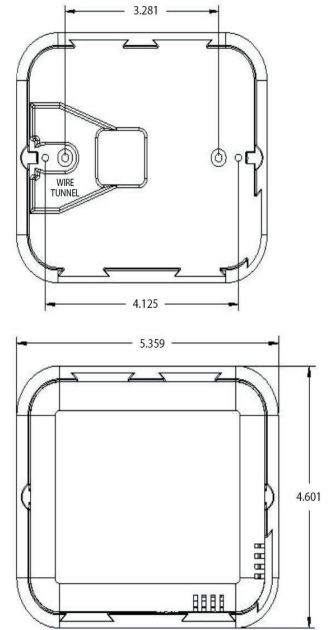
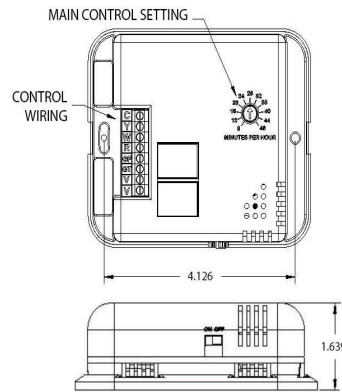
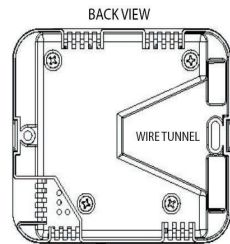
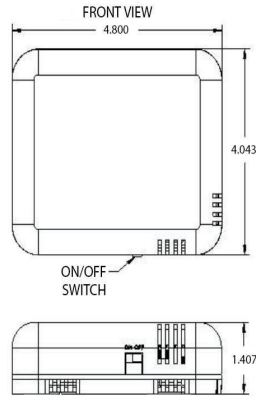
DIMENSIONAL DATA

FAD

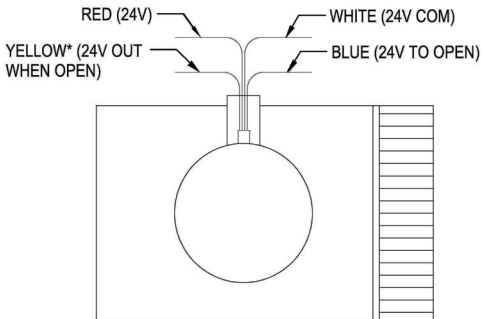


A Tube Size (Inches)	B Length (Inches)	C Total Height (Inches)	D (Inches)	E (Inches)	Weight (lbs.)
4	6	9 ⁵ / ₈	5 ⁵ / ₁₆	5	2.5
5	6	10 ⁵ / ₈	5 ⁵ / ₁₆	5	2.70
6	6 ½	11 ³ / ₈	1 ¹ / ₈	5 ½	3.10
7	7 ¹ / ₁₆	12 ³ / ₈	1 ³ / ₈	6 ¹ / ₁₆	3.55
8	8 ¹ / ₁₆	13 ³ / ₈	1 ⁷ / ₈	7 ¹ / ₁₆	4.40
10	12 ¹ / ₈	15 ⁵ / ₈	3 ⁷ / ₈	11 ¹ / ₈	6.95
12	12 ¹ / ₈	17 ⁵ / ₈	3 ⁷ / ₈	11 ¹ / ₈	9

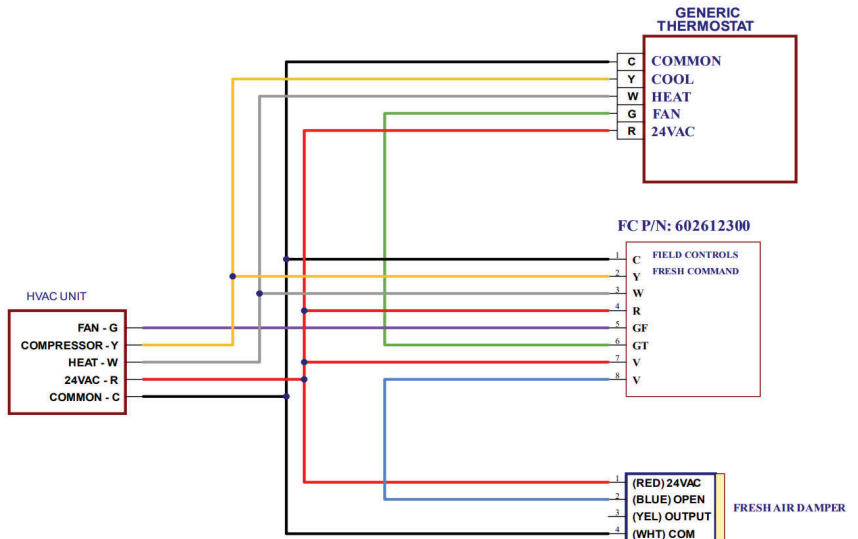
FCMC



FAD DAMPER CONTROL WIRING



WIRING DIAGRAM OF TYPICAL INSTALLATION



Field Controls
2630 Airport Road
Kinston, NC 28504
252 522-3031
Fax: 1 (800) 367-7942



Visit us at: www.fieldcontrols.com

PROJECT INFORMATION

Quoted by:	Date:
Project:	Remarks:
Quantity:	
Model:	
Site:	
Architect:	
Engineer:	
Contractor:	