

# Dehumidifiers

## Moisture Removal



## BENEFITS

Homes today may be more energy efficient due to tighter construction methods, but this can cause moisture to become trapped indoors. This results in musty odors and mold, mildew, and bacteria growth throughout the house. Controlling the humidity inside the home is essential for comfort, reduced health risks, and property protection. Field Controls Dehumidifiers (FC-DH) efficiently maintain proper humidity levels for a comfortable indoor environment. The FC-DH will work in conjunction with the HVAC system and assist in preventing mold growth by drawing indoor air through a mechanical process that condenses out the moisture.

## FEATURES

- Dynamic operation for peace-of-mind performance
- Perfect for basement and crawl space applications
- Ideal for whole house integration with HVAC systems
- Ultimate in corrosion protection
- Convenience for effortless system management
- Provides fail safe protection to turn off the dehumidifier if external condensate pump fails
- Allows selection of precise setpoint while monitoring actual room conditions

# HOW IT WORKS

FC-DH features an integrated dehumidistat to monitor the conditioned space. When the relative humidity rises above the selected setpoint, the dehumidifier will energize. Air is then drawn across an evaporator coil, which is cooler than the dew point air. This causes moisture to condense out the air. The air is then reheated through the condenser coil and distributed back into the room.

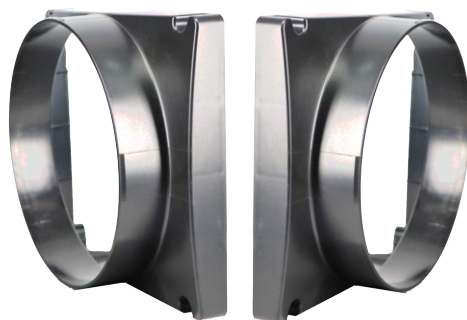


## WHOLE HOUSE DEHUMIDIFIER SPECIFICATIONS

Model	FC-60DH	FC-85DH	FC-120DH
Part Number	602609201	602609202	602609203
Rated Condensate Capacity (80°F, 60%)	60 ppd	85 ppd	120 ppd
Power Cord	120 VAC 3-Prong 10ft	120 VAC 3-Prong 10ft	120 VAC 3-Prong 10ft
Air Flow @ 0.00 in WC	155 CFM	185 CFM	300 CFM
Refrigerant	R410A	R410A	R410A
Inlet Filter	MERV10	MERV10	MERV10
Coverage	11,000 cu. ft	15,000 cu. ft.	21,000 cu. ft
Weight	56 lbs	56 lbs	74 lbs
Dimensions	21.7" L x 12" W x 12" H	21.7" L x 12" W x 12" H	23.75" L x 14" W x 16" H
Sound dBA	59 dBA	59 dBA	60 dBA



**Optional Upgrade:**  
DH1-RCK Remote Control  
PN: 602609206



**Optional Upgrade:**  
SM10C 10" Inlet Outlet Collars  
PN: 602609204 for MD#s 60DH, 85DH



**Optional Upgrade:**  
DH2-HK Hanging Kit  
PN: 602609207

LG10C 10" Inlet Outlet Collars  
PN: 602609205 for MD# 120DH

## WHOLE HOUSE DEHUMIDIFIER REPLACEMENT FILTERS

Part Number	Model	Description
602609701	SM10PF	Prefilter (3 pack) replacement for models 60DH / 85DH
602609702	LG10PF	Prefilter (3 pack) replacement for models 120DH
602609703	SMM10	MERV10 Filter (3 pack) replacement for models 60DH / 85DH
602609704	LGM10	MERV10 Filter (3 pack) replacement for model 120DH