

# ENGINEERING DATA



## Model: FCPV

Fresh Command Ventilation System w/ Power Ventilator

Part No. 603604000



### DESCRIPTION

The FCPV is an intelligent, automatic, year-round ventilation system that integrates with an existing HVAC system and thermostat to meet ASHRAE 62.2 requirements.

### ITEMS INCLUDED IN KIT

- Fresh Air Power Ventilator (FAPV-180AC)
- Fresh Command MultiFamily Control (FCMC)
- Mounting Hole Template
- Instruction Manual
- MERV-6 Washable Filter
- Mounting Brackets (2)
- Mounting Packet containing Sheet Metal Screws

### REPLACEMENT PARTS

Description	Part Number
FAPV-Prefilter	602604700
Motorized Impeller	602604800
Electronic Speed Control	04312200
24VAC Relay	46161400
8 Microfarad Motor Capacitor	602604900

### FAPV FEATURES

- Electronic Speed Control with readily accessible Off switch
- Continuous or intermittent Ventilation options
- Passive airflow-operated backdraft damper
- Included MERV6 Washable Air Filter
- Internal Slot for easy slide-in installation of a standard 10"x10"x2" air filter
- ETL Listed

### FCMC FEATURES

- Complies to ASHRAE 62.2 with built-in calculations for easy setup and installation
- Auto-senses 8 key factors at startup to balance temperature and humidity regardless of climate zone
- Built-in temperature and humidity sensors with no additional wiring needed
- Quick-Start Test feature for an immediate test cycle
- Fast Click, lock cover deters tenant or renter interference
- Seeks to ventilate with a heating or cooling call for optimal comfort and efficiency
- One dial to adjust intermittent ventilation
- On/off switch with easy access that does not require cover removal

### FAPV PRODUCT SPECIFICATIONS

Motorized Impeller Specifications	PSC Motor Class F Insulated Thermally protected UL, CSA recognized Impeller rated UL 94-5VA flammability Sealed ball bearings Nominal RPM: 2600
Power Supply	115 VAC, 60 Hz
Watts (mx speed)	85W
Amps (max speed)	0.90A
Temperature Range	-22 to 140°F Ambient Outdoor Temperature
Control Voltage (optional)	24 VAC
Air Flow Range	30 to 220 cfm @ 0.20 Static Pressure
Filtration	MERV 6, Washable, UL-900 rated

### FCMC PRODUCT SPECIFICATIONS

Power Requirements (Class 2 Appliance)

Power	
Input Voltage	16-32 VAC
Full Load Power	1.28W 27.4VAC
Idle Power	270mW @ 27.4 VAC
Wiring Requirements	18-22 AWG, 24 VAC (Min)
Operating Temperature Range	10°F to 160°F
Operating Humidity Range	5 to 95% RH (non-condensing)

Outputs	
Fan Output GF (Maximum Load Current)	8A inductive @30VAC
Vent (V.V) (Maximum Load Current)	8A inductive @30VAC, or 30ADC

Field Controls LLC reserves the right to modify a product, without prior notice, whether in design, color or specifications, in order to offer at all times a quality product that is highly competitive. Please consult your national and local building codes to find out whether the installation of electrical products requires the services of a certified technician or electrician. Field Controls is a registered Trademark used under license by Field Controls LLC. All rights reserved.



Field Controls  
2630 Airport Road  
Kinston, NC 28504  
252 522-3031  
Fax: 1 (800) 367-7942



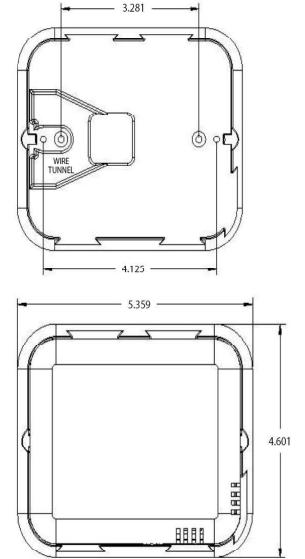
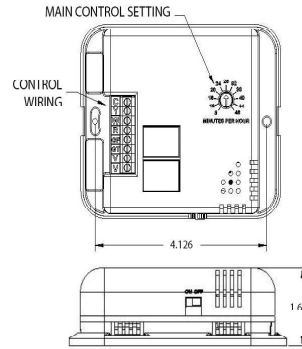
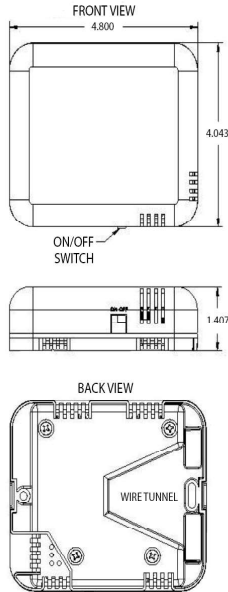
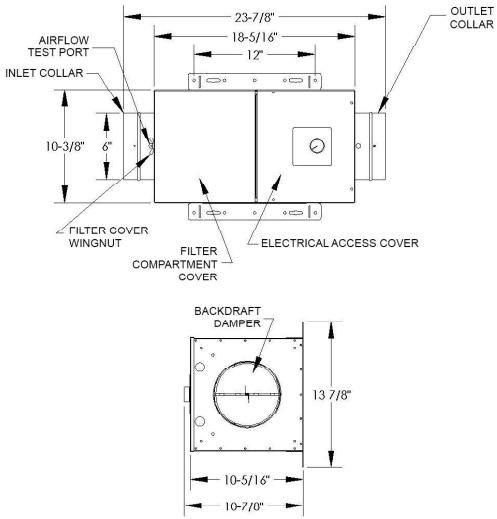
Visit us at: [www.fieldcontrols.com](http://www.fieldcontrols.com)

# ENGINEERING DATA FCPV

## DIMENSIONAL DATA

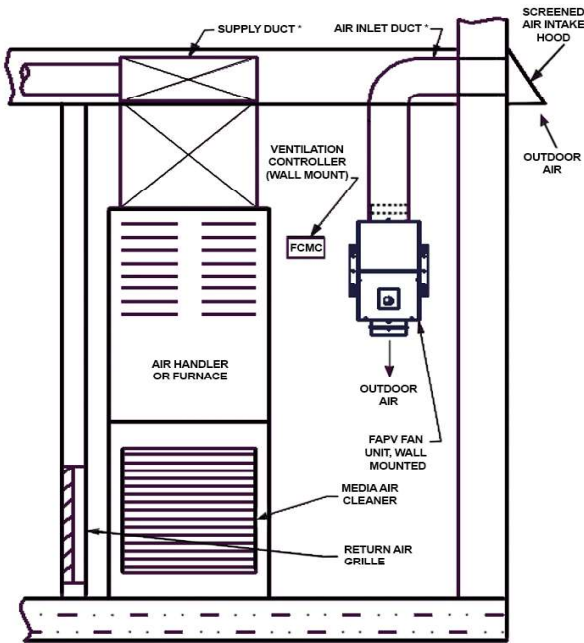
FAPV

FCMC



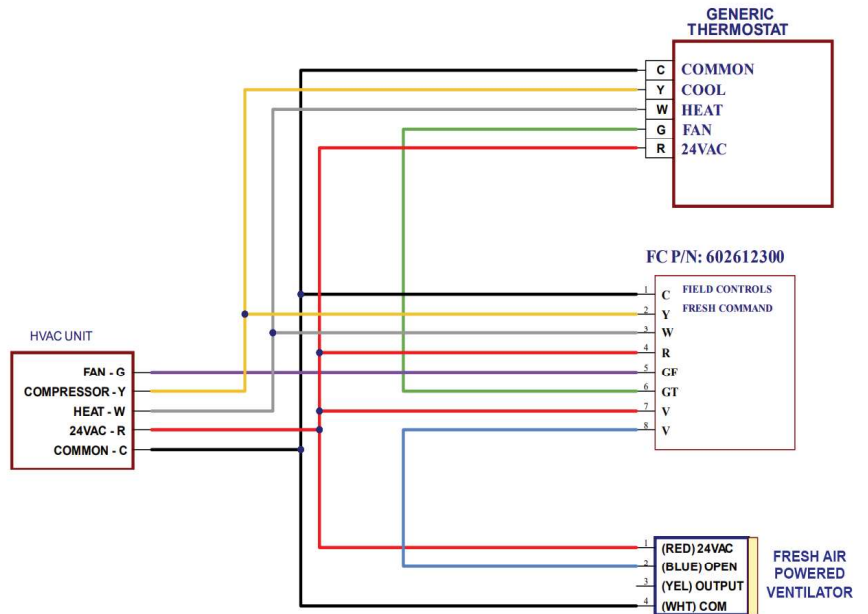
## INSTALLATION

### MECHANICAL CLOSET TYPICAL INSTALLATION



\*NOTE: DUCT INSULATION NOT SHOWN

## WIRING DIAGRAM OF TYPICAL INSTALLATION



Field Controls  
2630 Airport Road  
Kinston, NC 28504  
252 522-3031  
Fax: 1 (800) 367-7942



Visit us at: [www.fieldcontrols.com](http://www.fieldcontrols.com)

## PROJECT INFORMATION

Quoted by:	Date:
Project:	Remarks:
Quantity:	
Model:	
Site:	
Architect:	
Engineer:	
Contractor:	