

ENGINEERING DATA



Model: FlexFilter Merv11 & Merv13

Expandable Flexible Filter

Flex-1, Flex-2, Flex-3, Flex-4, Flex-5, Flex-5.5, Flex-6.5, Flex-7, Flex-7.5



FILTER MODELS

M11 FLEX MODELS	PART NUMBER
Flex-1 M11	46600407
Flex-2 M11	46600401
Flex-3 M11	46600406
Flex-4 M11	46600405
Flex-5 M11	46600402
Flex-5.5 M11	46600408
Flex-6.5 M11	46600409
Flex-7 M11	46600404
Flex-7.5 M11	46600410
M13 FLEX MODELS	PART NUMBER
Flex-1 M13	602612201
Flex-2 M13	602612202
Flex-3 M13	602612203
Flex-4 M13	602612204
Flex-5 M13	602612205
Flex-5.5 M13	602612215
Flex-6.5 M13	602612216
Flex-7.5 M13	602612217

CERTIFICATIONS

cULus



Field Controls
2630 Airport Road
Kinston, NC 28504

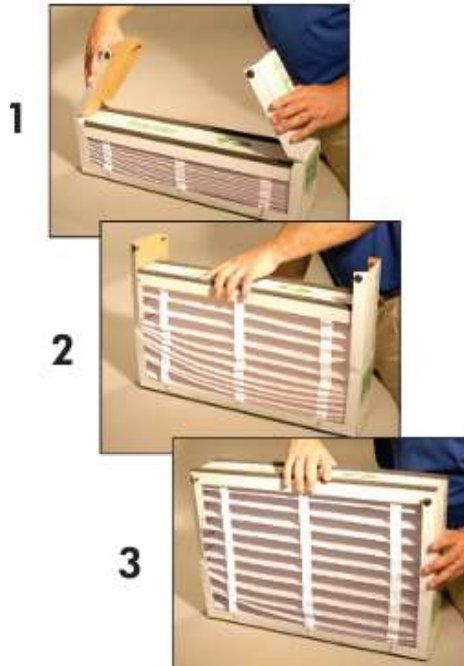
252 522-3031
Fax: 1 (800) 367-7942

Visit us at: www.fieldcontrols.com

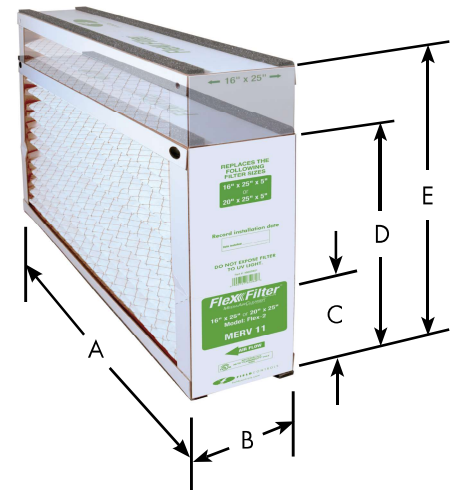
BENEFITS

- Patented 2-in-1 expandable filter design
- High efficiency MERV11 or MERV13 options
- Compact design protects filter from damage
- Save time and money with improved inventory management
- Includes a bag for convenient disposal of old filter
- Plastic Buttons snap into place quickly and easily

INSTALLS IN SECONDS



DIMENSIONS



MODEL	'A'	'B'	'C'	'D'	'E' (if applicable)
FLEX-1	20.75	4.75	5.5	15.5	19.5
FLEX-2	24.375	4.75	6.5	15.5	19.75
FLEX-3	19.875	4.375	7	15.75	19.875
FLEX-4	24.75	4.375	7	15.875	19.875
FLEX-5	25	4.125	5.75	20.25	-
FLEX-5.5	25.375	3.438	5.5	20.5	-
FLEX-6.5	20	3.438	5.5	18.75	-
FLEX-7	27.875	4.125	5.5	15.7875	-
FLEX-7.5	28.25	3.438	5.5	16.25	-

* Gasket material is not included overall dimensions for 'C', 'D', and 'E'.

Field Controls LLC reserves the right to modify a product, without prior notice, whether in design, color or specifications, in order to offer at all times a quality product that is highly competitive. Please consult your national and local building codes to find out whether the installation of electrical products requires the services of a certified technician or electrician. Field Controls is registered Trademark used under license by Field Controls LLC. All rights reserved.

ENGINEERING DATA

FLEXFILTER® REPLACEMENT GUIDE					
BRAND	FILTER MODEL	SIZE (INCHES)	FITS AIR CLEANER MODEL	REPLACEMENT FLEX MODEL	PART #
FIELD CONTROLS®	FCRM11-2020	20 x 20 x 5	FC11-2020	FLEX-1 M11 FLEX-1 M13	46600407 602612201
	FCRM11-1625	16 x 25 x 5	FC8-1625 / FC11-1625	FLEX-2 M11 FLEX-2 M13	46600401 602612202
	FCRM11-2025	20 x 25 x 5	FC8-2025 / FC11-2025 FCRA11-2025		
SKUTTLE®	000-0448-007 (003)	20 x 20 x 5	DB-20-20	FLEX-1 M11 FLEX-1 M13	46600407 602612201
	000-0448-008 (004)	16 x 20 x 5	DB-20-16	FLEX-2 M11 FLEX-2 M13	46600401 602612202
	000-0448-005 (001)	16 x 25 x 5	DB-25-16		
	000-0448-006 (002)	20 x 25 x 5	DB-25-20		
GENERALAIRE®	5FM2020 (4531)	20 x 20 x 5	MAC2020 / MAC2020M	FLEX-1 M11 FLEX-1 M13	46600407 602612201
	5FM1625 (4511)	16 x 25 x 5	MAC1400 / MAC1400M	FLEX-2 M11 FLEX-2 M13	46600401 602612202
	5FM2025 (4501)	20 x 25 x 5	MAC2000 / MAC2000M MAC-L		
TRION®	255649-103 / 259112-113	20 x 20 x 5	455602-225 / 455602-725	FLEX-1 M11 FLEX-1 M13	46600407 602612201
	255649-105 / 259112-105	16 x 25 x 5	455602-125 / 455602-625	FLEX-2 M11 FLEX-2 M13	46600401 602612202
	255649-102 - 259112-102	20 x 25 x 5	455602-025 / 455602-525 266380-010 / 266380-510 447380-010 / 477380-510		
ULTRAVATION®	91-013	20 x 20 x 5	90-116	FLEX-1 M11 FLEX-1 M13	46600407 602612201
	91-012	16 x 20 x 5	90-115	FLEX-2 M11 FLEX-2 M13	46600401 602612202
	91-005	16 x 25 x 5	90-106		
	91-006	20 x 25 x 5	90-107		
			90-064 / 90-027		
HONEYWELL®	POPUP1620	16 x 20 x 4	F100F2028 / F200E1003	FLEX-3 M11 FLEX-3 M13	46600406 602612203
	FC100A1003	16 x 20 x 4	F100F2028		
	FC200E1003	16 x 20 x 4	F200E1003		
	POPUP2020	20 x 20 x 4	F100F2036 / F200E1029		
	FC100A1011	20 x 20 x 4	F100F2036		
	FC200E1011	20 x 20 x 4	F200E1029	FLEX-4 M11 FLEX-4 M13	46600405 602612204
	POPUP1625	16 x 25 x 4	F100F2002 / F200E1011		
	FC100A1029	16 x 25 x 4	F100F2002		
	FC200E1029	16 x 25 x 4	F200E1011		
	POPUP2025	20 x 25 x 4	F100F2010 / F200E1037		
FC100A1037	20 x 25 x 4	F100F2010			
FC200E1037	20 x 25 x 4	F200E1037			
CARRIER® BRYANT®	EXPXXFIL0016	16 x 25 x 4	EZXCAB1016	FLEX-4 M11 FLEX-4 M13	46600405 602612204
	EXPXXFIL0316				
	EXPXXFIL0020	20 x 25 x 4	EZXCAB1020		
	EXPXXFIL0320				
DAIKIN® GOODMAN®	AMP-11-1625-45	16 x 25 x 4	Daikin AM11-1625-FB	FLEX-4 M11 FLEX-4 M13	46600405 602612204
APRILAIRE®	201	20 x 25 x 4	2200, 2120	FLEX-5 M11 FLEX-5 M13	46600402 602612205
	210	20 x 25 x 4	1210, 2210, 3210, 4200, 1213, 2120 + 1213	FLEX-5.5 M11 FLEX-5.5 M13	46600408 602612215
	213				
	310	19 x 20 x 4	1310, 2310, 3310, 4300	FLEX-6.5 M11 FLEX-6.5 M13	46600409 602612216
	313				
	401	16 x 28 x 4	2400, 2140	FLEX-7 M11	46600404
	410		1410, 2410, 3410, 4400, 1413, 2140 + 1413	FLEX-7.5 MERV 11 FLEX-7.5 MERV 13	46600410 602612217
413					

ENGINEERING DATA

MERV 13 FlexFilter Pressure Drop ("WC)

CFM	FLEX-1 M13		FLEX-2 M13		FLEX-3 M13		FLEX-4 M13		FLEX-5 M13	FLEX-5.5 M13	FLEX-6.5 M13	FLEX-7.5 M13
	16x20	20x20	16x25	20x25	16x20	20x20	16x25	20x25	20x25	20x25	19x20	16x25
200	0.000	0.000	0.000	0.000	0.001	0.000	0.001	0.000	0.000	0.000	0.000	0.001
400	0.012	0.001	0.001	0.001	0.021	0.003	0.003	0.001	0.001	0.002	0.011	0.048
600	0.067	0.030	0.029	0.010	0.077	0.038	0.037	0.011	0.018	0.019	0.053	0.073
800	0.141	0.075	0.075	0.029	0.148	0.080	0.086	0.038	0.048	0.048	0.106	0.057
1000	0.222	0.121	0.132	0.066	0.234	0.134	0.140	0.072	0.083	0.080	0.169	0.147
1200	0.326	0.182	0.198	0.106	0.325	0.193	0.197	0.117	0.120	0.123	0.239	0.196
1400	0.447	0.246	0.280	0.150	0.437	0.260	0.276	0.156	0.163	0.160	0.136	0.253
1600	0.585	0.323	0.374	0.199	0.565	0.336	0.356	0.206	0.210	0.203	0.400	0.318
1800	0.754	0.408	0.495	0.258	0.719	0.422	0.460	0.261	0.264	0.256	0.495	0.391
2000	0.902	0.504	0.612	0.352	0.879	0.510	0.557	0.354	0.356	0.352	0.610	0.472



Field Controls
2630 Airport Road
Kinston, NC 28504
252 522-3031
Fax: 1 (800) 367-7942

Field Controls
9154 Stellar Court
Corona, CA 92883
951-277-0304

Visit us at: www.fieldcontrols.com

PROJECT INFORMATION

Quoted by:	Date:
Project:	Remarks:
Quantity:	
Model:	
Site:	
Architect:	
Engineer:	
Contractor:	